

# Saddle Finisher-G1

# PARTS CATALOG

REVISION 0

**Canon**

APR. 2001

**FY8-31FF-000**

## PREFACE

This Parts Catalog contains listings of parts used in the Canon Saddle Finisher-G1. Diagrams are provided with the listings to aid the service technician in identifying clearly, the item to be ordered.

Whenever ordering parts, consult this Parts Catalog for all of the information pertaining to each item. Be sure to include, in the Parts Request, the full item description, the item part number, and the quantity.

Canon Inc.

Office Imaging Products Quality Assurance Center  
5-1, Hakusan 7-chome,  
Toride-city, Ibaraki 302-8501, Japan

*COPYRIGHT © 2001 CANON INC.*

*Printed in Japan*

*Imprimé au Japon*

Use of this manual should be strictly supervised to avoid disclosure of confidential information.

# CONTENTS

## - Saddle Finisher-G1 -

- QA. ASSEMBLY LOCATION DIAGRAM
  
- Q01. MOUNTING HARDWARE
  
- Q10. EXTERNAL COVERS, PANELS, ETC.
- Q11. INTERNAL COMPONENTS 1
- Q12. INTERNAL COMPONENTS 2
  
- Q20. STACK MOTOR DRIVER ASSEMBLY
- Q22. DRIVE ASSEMBLY
- Q24. BUNDLE SUPPORT COVER ASSEMBLY
  
- Q30. DISPOSE ASSEMBLY
- Q32. PAPER FEEDER ASSEMBLY
- Q35. FOLD ASSEMBLY
  
- Q40. STAPLE ASSEMBLY
  
- Q90. DC CONTROLLER PCB ASSEMBLY
  
- QB1. LIST OF CONNECTORS
- QB2. LIST OF ELECTRIC PARTS

## - Puncher Unit-J1/K1/G1/H1 -

- QA. ASSEMBLY LOCATION DIAGRAM
  
- Q13. PUNCHER ASSEMBLY
- Q14. PUNCHER TOTAL ASSEMBLY
  
- QB1. LIST OF CONNECTORS
- QB2. LIST OF ELECTRIC PARTS
  
- C. LIST OF STANDARD FASTENERS
  
- D1. NUMERICAL INDEX  
(Saddle Finisher-G1)
- D2. NUMERICAL INDEX  
(Puncher Unit-J1/K1/G1/H1)



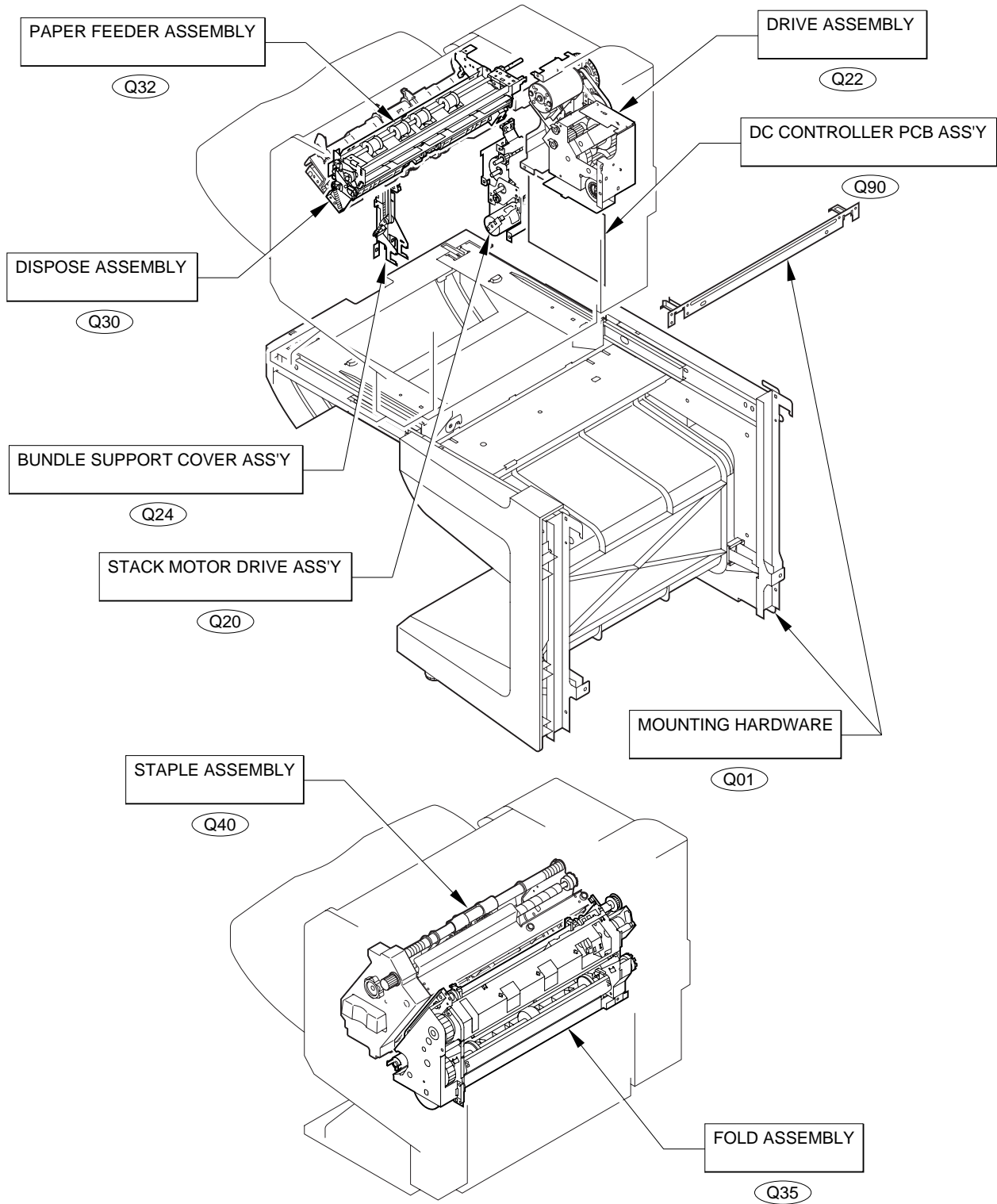
# Saddle Finisher-G1

[ F25-7701 XEH00001 - ]

# CONTENTS

- QA. ASSEMBLY LOCATION DIAGRAM
  
- Q01. MOUNTING HARDWARE
  
- Q10. EXTERNAL COVERS, PANELS, ETC.
- Q11. INTERNAL COMPONENTS 1
- Q12. INTERNAL COMPONENTS 2
  
- Q20. STACK MOTOR DRIVER ASSEMBLY
- Q22. DRIVE ASSEMBLY
- Q24. BUNDLE SUPPORT COVER ASSEMBLY
  
- Q30. DISPOSE ASSEMBLY
- Q32. PAPER FEEDER ASSEMBLY
- Q35. FOLD ASSEMBLY
  
- Q40. STAPLE ASSEMBLY
  
- Q90. DC CONTROLLER PCB ASSEMBLY
  
  
- QB1. LIST OF CONNECTORS
- QB2. LIST OF ELECTRIC PARTS
  
  
- D1. NUMERICAL INDEX

# FIGURE QA ASSEMBLY LOCATION DIAGRAM



# FIGURE Q01 MOUNTING HARDWARE

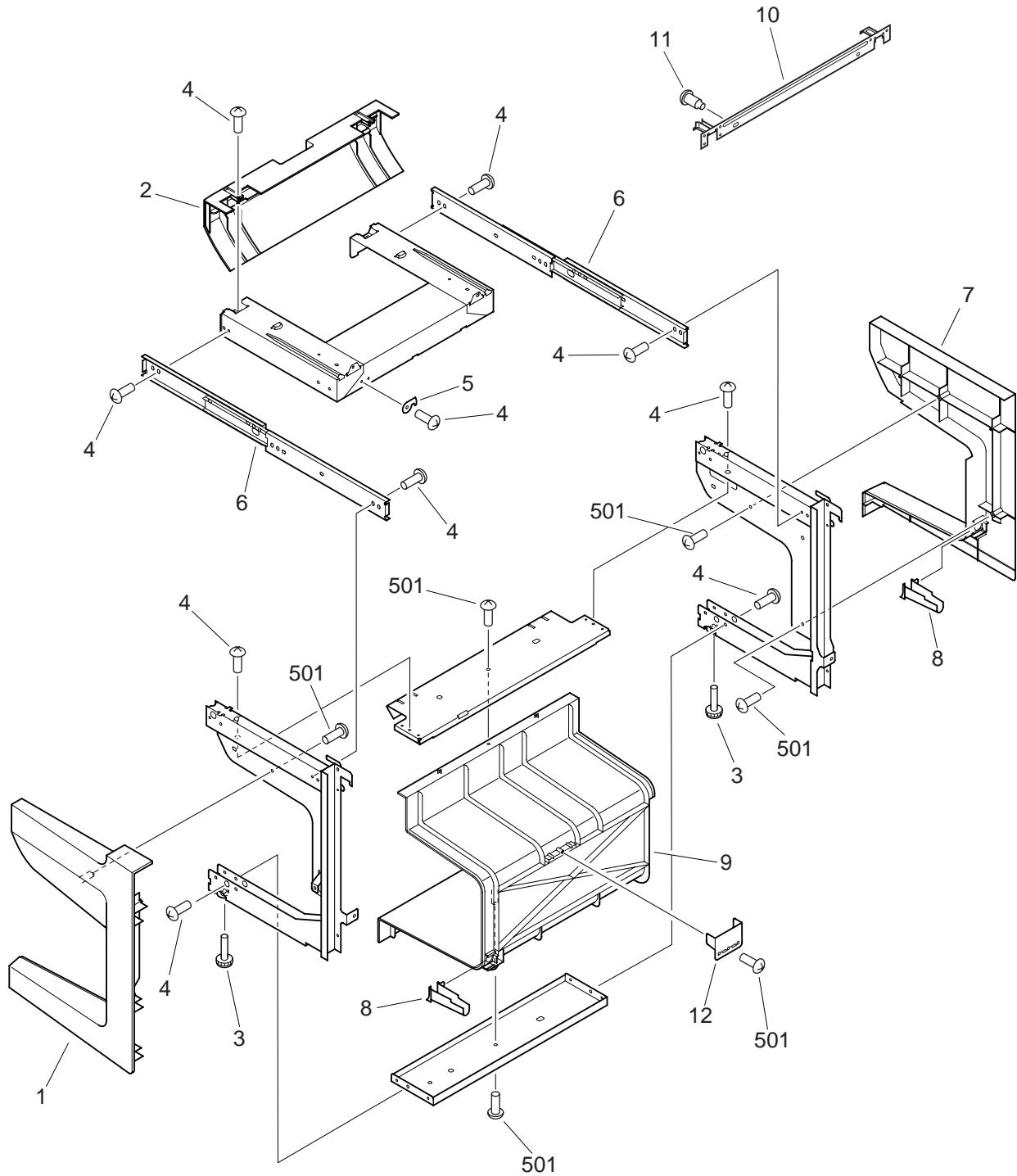




FIGURE & KEY NO.	PART NUMBER	RANK	QTY	DESCRIPTION	SERIAL NUMBER / REMARKS
Q01 -	NPN		RF	MOUNTING HARDWARE	
1	4A1-8541-000		1	PANEL, MOUNTING KIT, FRONT	
2	4A1-8545-000		1	PANEL, MOUNTING KIT	
3	4A1-8547-000		2	ADJUSTER	
4	FC2-2120-000		15	SCREW, M4X7	
5	4A1-8537-000		1	PLATE, MOUNTING KIT STOPPER	
6	4A1-8538-000		2	RAIL, SLIDE	
7	4A1-8542-000		1	PANEL, MOUNTING KIT, REAR	
8	4A1-8543-000		2	DUCT, ACCESS MOUNTING KIT	
9	4A1-8544-000		1	PANEL, MOUNTING KIT, MIDDLE	
10	4A1-8548-000		1	LATCH, MOUNTING KIT	
11	FS1-9073-000		2	SCREW, STEPPED, M4	
12	4A1-7593-000		1	COVER, MIDDLE MOUNTING KIT, SUB	
501	XB4-7401-007		6	SCREW, TAPPING, TRUSS HEAD, M4X10	

# FIGURE Q10 EXTERNAL COVERS, PANELS, ETC.

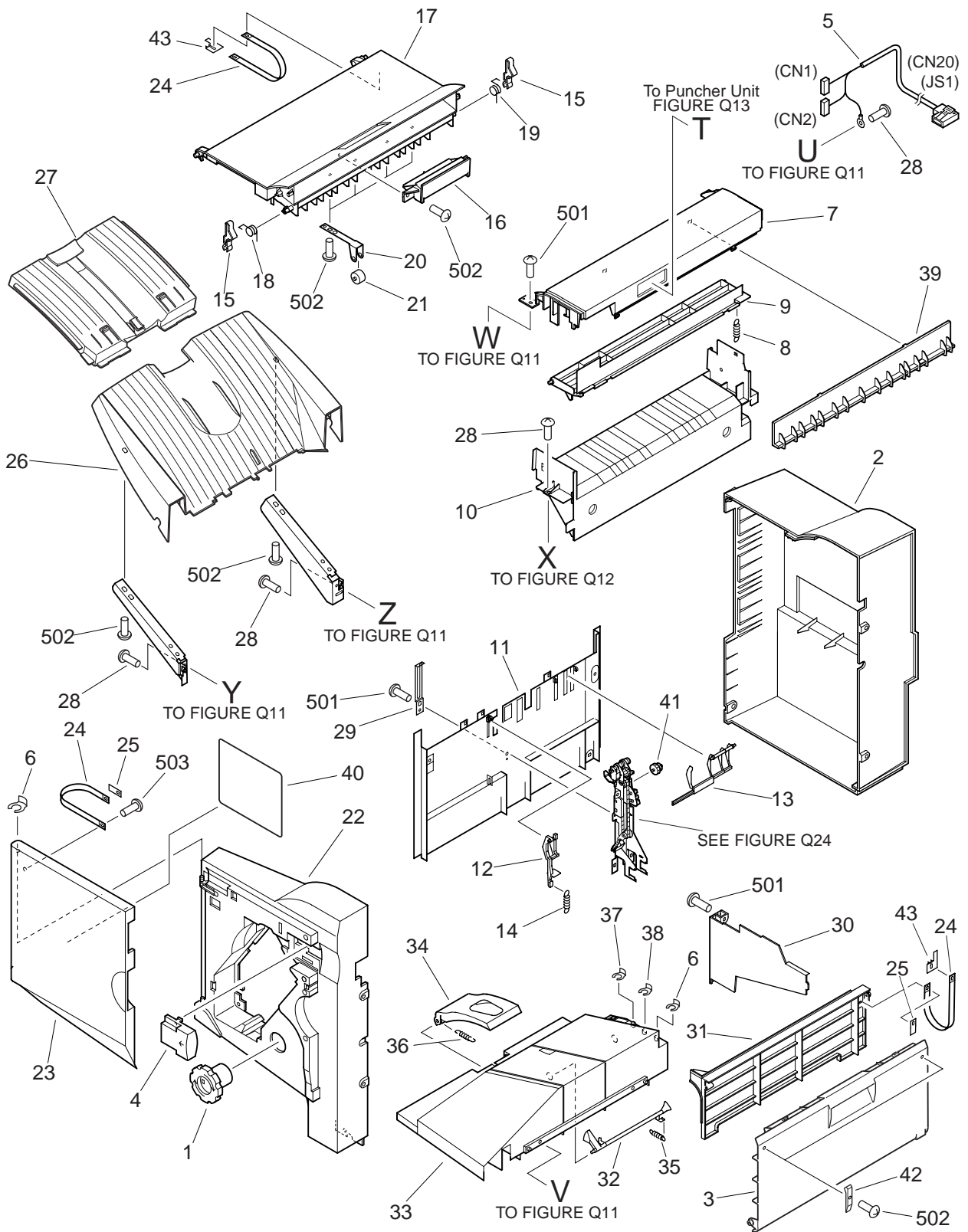


FIGURE & KEY NO.	PART NUMBER	R A N K	Q' T Y	DESCRIPTION	SERIAL NUMBER / REMARKS
Q10 -	NPN		RF	EXTERNAL COVERS, PANELS, ETC.	
1	4A1-7294-000		1	KNOB, JAM CLEARING	
2	4A1-7501-000		1	PANEL, REAR	
3	4A1-7520-000		1	PANEL, FRAME JAM	
4	4A1-7503-000		1	COVER, JAM	
5	4H1-6451-000		1	CABLE, INTERFACE	CN1,2,20,JS1
6	FC2-5827-000		2	CLIP	
7	4A1-7373-000		1	PANEL, DUMMY PUNCHER	
8	4A1-7380-000		1	SPRING, TENSION	
9	4A1-7535-000		1	GUIDE, DUMMY PUNCH, UPPER	
10	4A1-7689-000		1	GUIDE, DUMMY PUNCH	
11	4A1-7287-000		1	PANEL, SIDE	
12	4A1-7291-000		1	LEVER, TRAY UP/DOWN EMPTY	
13	4A1-7293-000		1	FLAG, PAPER SENSING, REAR	
14	4A1-7415-000		1	SPRING, TENSION	
15	4A1-7378-000		2	LATCH, UPPER PANEL	
16	4A1-7497-000		1	PANEL, UPPER, SUB	
17	4A1-7498-000		1	PANEL, UPPER	
18	4A1-7547-000		1	SPRING, TORSION	
19	4A1-7548-000		1	SPRING, TORSION	
20	4A1-7195-000		1	HOLDER, ROLLER	
21	4A1-7317-000		1	ROLLER, PAPER FEED	
22	4A1-7499-000		1	PANEL, FIXING	
23	4A1-7500-000		1	PANEL, FRONT	
24	4A1-8313-000		3	BAND, PANEL	
25	4B1-0585-000		2	SUPPORT, PANEL BAND, 2	
26	FB5-0658-000		1	STACK TRAY, 1	
27	FB5-0659-000		1	STACK TRAY, 2	
28	FC2-2120-000		AR	SCREW, M4X7	
29	4A1-7424-000		1	PLATE, GROUNDING	

FIGURE & KEY NO.	PART NUMBER	RANK	QTY	DESCRIPTION	SERIAL NUMBER / REMARKS
Q10 - 30	4A1-7374-000		1	PANEL, DOME, 1	
31	4A1-7375-000		1	PANEL, DOME, 2	
32	4A1-7270-000		1	FLAG, BASE TRAY	
33	4A1-7277-000		1	TRAY, BASE	
34	4A1-7369-000		1	ARM, STOPPER	
35	4A1-7400-000		1	SPRING, TENSION	
36	4A1-7408-000		1	SPRING, TENSION	
37	4A1-7566-000		1	CLIP, SHAFT	
38	4A1-7567-000		1	CLIP, SHAFT	
39	4A1-8338-000		1	GUIDE, DUMMY PUNCHER PAPER	
40	4A1-8339-000		1	LABEL, STAPLE REMOVING	
41	4A1-7284-000		1	GEAR, 48T/PULLEY, 15T	
42	4A1-7594-000		2	COVER, FRAME JAM, SUB	
43	4B1-0584-000		2	SUPPORT, PANEL BAND, 1	
501	XB1-2400-607		8	SCREW,MACH.,TRUSS HEAD,M4X6	
502	XB4-7401-007		10	SCREW,TAPPING,TRUSS HEAD,M4X10	
503	XB4-7300-607		1	SCREW,TAPPING,TRUSS HEAD,M3X6	



# FIGURE Q11 INTERNAL COMPONENTS 1

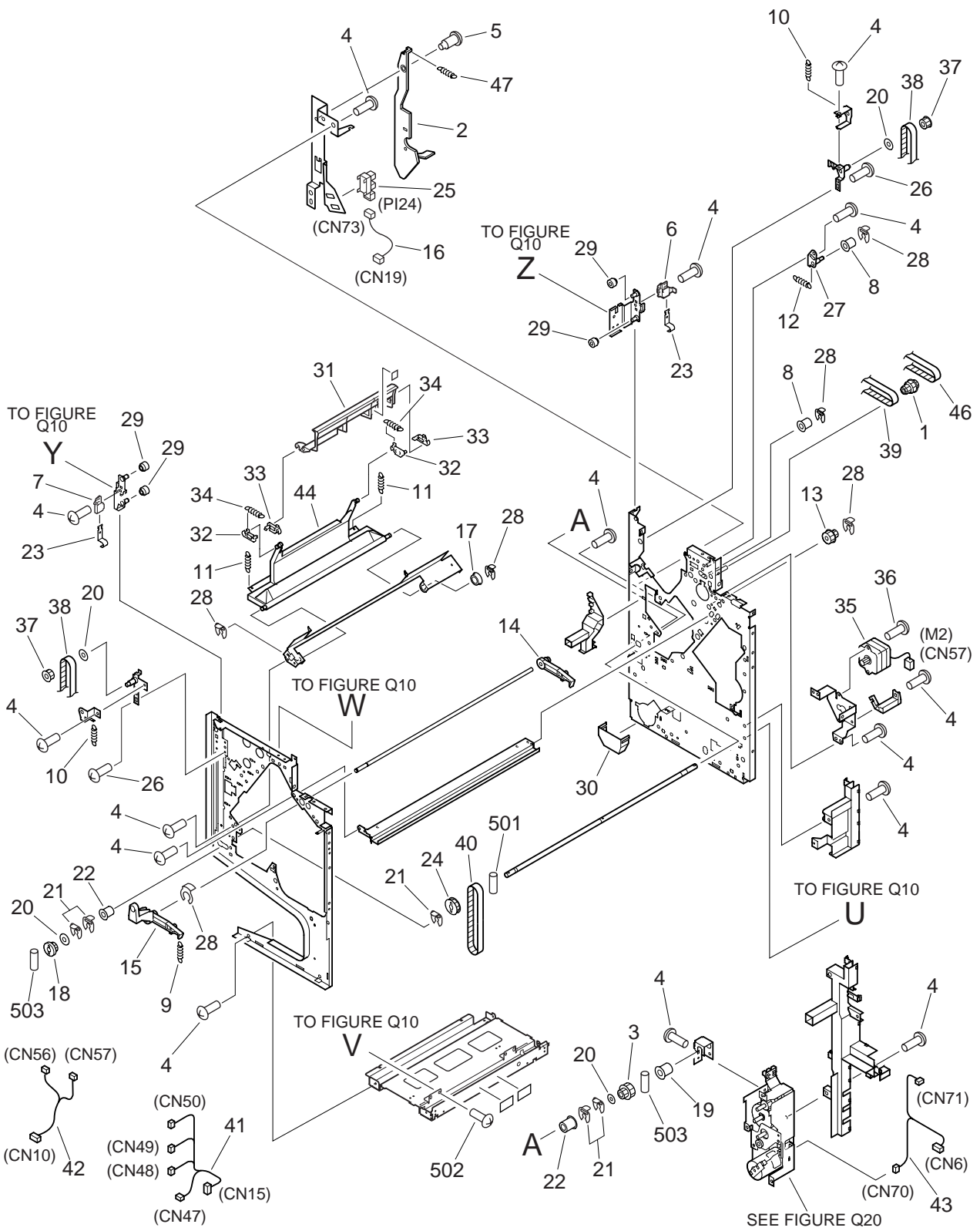


FIGURE & KEY NO.	PART NUMBER	RANK	QTY	DESCRIPTION	SERIAL NUMBER / REMARKS
Q11 -	NPN		RF	INTERNAL COMPONENTS 1	
1	4A1-7267-000		1	GEAR, 24T/PULLEY, 24T	
2	4A1-7577-000		1	LEVER, STACK	
3	4A1-7259-000		1	GEAR, 16T/PULLEY, 18T	
4	FC2-2120-000		AR	SCREW, M4X7	
5	FS1-9009-000		1	SCREW, STEPPED, M3	
6	4A1-7353-000		1	HOLDER, BELT, REAR	
7	4A1-7354-000		1	HOLDER, BELT, FRONT	
8	4A1-7371-000		2	ROLLER, TENSIONER	
9	4A1-7428-000		1	SPRING, TENSION	
10	4A1-7414-000		2	SPRING, TENSION	
11	4A1-7417-000		2	SPRING, TENSION	
12	4A1-7419-000		1	SPRING, TENSION	
13	4A1-7509-000		1	PULLEY, 18T/24T	
14	4A1-7517-000		1	LATCH, 1	
15	4A1-7518-000		1	LATCH, 2	
16	4H1-6512-000		1	CABLE, STACK SENSOR	CN19,73
17	4A1-7523-000		1	BUSHING	
18	4A1-7524-000		1	PULLEY, 18T	
19	4A1-7528-000		1	BUSHING	
20	4A1-7542-000		4	FLANGE	
21	4A1-7567-000		5	CLIP, SHAFT	
22	4A1-7572-000		2	BUSHING	
23	4A1-7691-000		2	SPRING, LEAF	
24	4A1-7288-000		1	PULLEY, 40T	
25	WG8-5362-000		1	IC, TLP1241, PHOTO-INTERRUPTER	PI24 CN73
26	4S1-9077-000		2	SCREW, M4X8	
27	4F1-1556-000		1	PLATE, PAPER FEED TENSIONER, 1	
28	FC2-5827-000		4	CLIP	
29	4A1-7265-000		4	ROLLER, RAIL	

FIGURE & KEY NO.	PART NUMBER	R A N K	Q' T Y	DESCRIPTION	SERIAL NUMBER / REMARKS
Q11 - 30	4A1-7534-000		1	CAP, MOTOR	
31	4A1-7318-000		1	GUIDE, STOPPER	
32	4A1-7539-000		2	LINK, 1	
33	4A1-7540-000		2	LINK, 2	
34	4A1-7549-000		2	SPRING, TENSION	
35	4K1-1065-000		1	MOTOR, STEPPING	M2 CN57
36	FC2-5034-000		3	SCREW,W/WASHER,M3X6	
37	4A1-7355-000		2	PULLEY, 18T	
38	XF2-1817-960		2	BELT, TIMING	
39	XF2-1619-860		1	BELT, TIMING	
40	XF2-1618-840		1	BELT, TIMING	
41	4H1-6460-000		1	CABLE, SENSOR, 1	CN15,47-49,50
42	4H1-6463-000		1	CABLE, FEED PADDLE MOTOR	CN10,56,57
43	4H1-6467-000		1	CABLE, DC MOTOR	CN6,70,71
44	4A1-7321-000		1	ARM, STOPPER	
46	XF2-1605-040		1	BELT, TIMING	
47	4A1-7400-000		1	SPRING, TENSION	
501	XD3-2200-142		1	PIN,DOWEL	
502	XB4-7401-007		3	SCREW,TAPPING,TRUSS HEAD,M4X10	
503	XD3-2300-142		2	PIN,DOWEL	





# FIGURE Q12 INTERNAL COMPONENTS 2

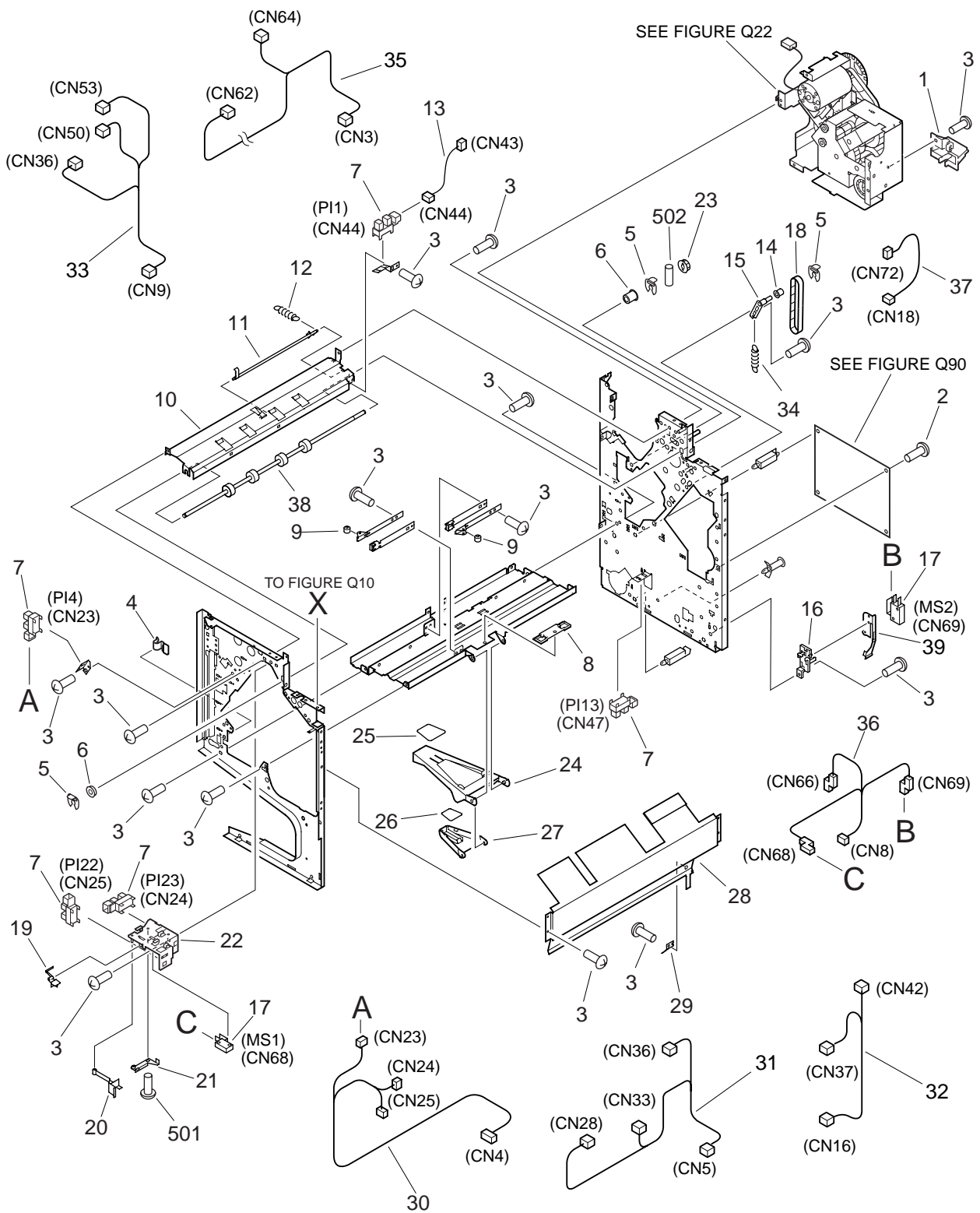


FIGURE & KEY NO.	PART NUMBER	RANK	QTY	DESCRIPTION	SERIAL NUMBER / REMARKS
Q12 -	NPN		RF	INTERNAL COMPONENTS 2	
1	4A1-7502-000		1	COVER, STOPPER	
2	4S1-9077-000		2	SCREW,M4X8	
3	FC2-2120-000		AR	SCREW, M4X7	
4	4B1-0586-000		1	PLATE, STAPLER FRAME STOPPER	
5	FC2-5827-000		5	CLIP	
6	FS2-1672-000		2	BUSHING	
7	WG8-5362-000		5	IC, TLP1241, PHOTO-INTERRUPTER	PI1,4,13,22,23 CN44,23,47,25,24
8	4A1-8316-000		1	COVER, BLANKING	
9	4A1-7515-000		2	ROLLER, FRAME TRAY	
10	4A1-7172-000		1	GUIDE, PAPER, LOWER	
11	4A1-7349-000		1	FLAG, SENSOR	
12	4A1-7418-000		1	SPRING, TENSION	
13	4H1-6454-000		1	CABLE, SENSOR	CN43,44
14	4A1-7371-000		1	ROLLER, TENSIONER	
15	4F1-1557-000		1	PLATE, PAPER FEED TENSIONER, 2	
16	4A1-7336-000		1	HOLDER, SWITCH	
17	4H1-6449-000		2	MICROSWITCH	MS1,2 CN68,69
18	XF2-1607-440		1	BELT, TIMING	
19	4A1-7505-000		1	FLAG, TOP SENSOR	
20	4A1-7506-000		1	LEVER, SWITCH	
21	4A1-7507-000		1	HOLDER, LEVER SUPPORT	
22	4A1-7508-000		1	HOLDER, SENSOR/MICROSWITCH	
23	4A1-7268-000		1	GEAR, 24T	
24	4A1-7269-000		1	GUIDE, PAPER WEIGHT, 1	
25	4A1-7495-000		1	PLATE, WEIGHT, 1	
26	4A1-7496-000		1	PLATE, WEIGHT, 2	
27	4A1-7527-000		1	GUIDE, PAPER WEIGHT, 2	
28	4A1-7488-000		1	PANEL, FRAME COVER	
29	4A1-8314-000		1	SPRING, LEAF, GROUNDING	

FIGURE & KEY NO.	PART NUMBER	RANK	QTY	DESCRIPTION	SERIAL NUMBER / REMARKS
Q12 - 30	4H1-6452-000		1	CABLE, FRONT DOOR SENSOR	CN4,23-25
31	4H1-6453-000		1	CABLE, LEVER TRAY SENSOR	CN5,28,33,36
32	4H1-6461-000		1	CABLE, SENSOR, 2	CN16,37,42
33	4H1-6462-000		1	CABLE, SENSOR, 3	CN9,36,50,53
34	4A1-7409-000		1	SPRING, TENSION	
35	4H1-6465-000		1	CABLE, JOG MOTOR	CN3,62,64
36	4H1-6466-000		1	CABLE, SWITCH	CN8,66,68,69
37	4H1-6511-000		1	CABLE, BIND CLUTCH	CN18,72
38	4A1-7382-000		1	ROLLER, PAPER FEED	
39	4A1-8337-000		1	PLATE, SWITCH PUSH	
501	XB4-7401-007		1	SCREW,TAPPING,TRUSS HEAD,M4X10	
502	XD3-2200-122		1	PIN,DOWEL	



# FIGURE Q20 STACK MOTOR DRIVER ASSEMBLY

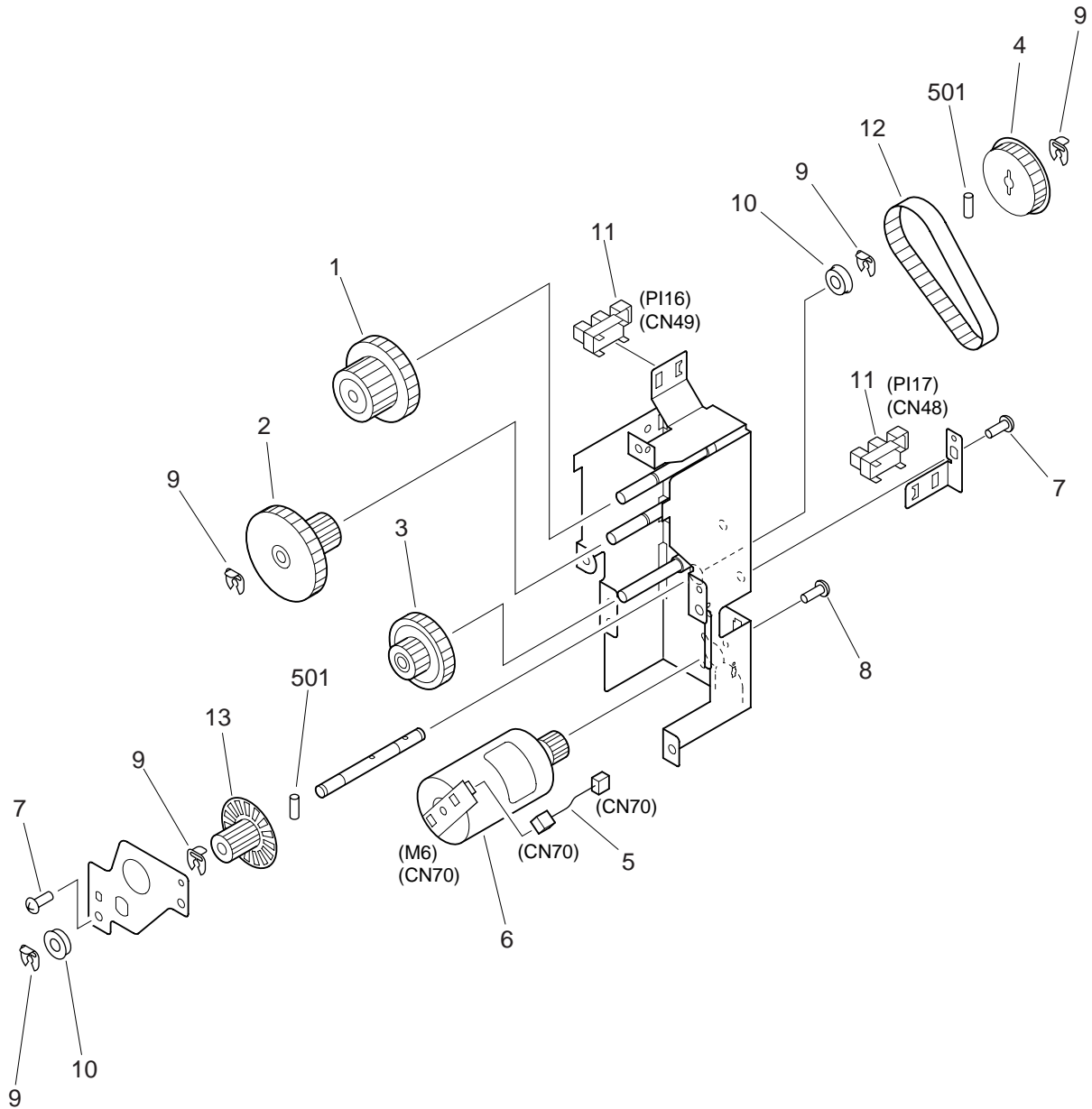


FIGURE & KEY NO.	PART NUMBER	RANK	QTY	DESCRIPTION	SERIAL NUMBER / REMARKS
Q20 -	4G1-3999-000		1	STACK MOTOR DRIVER ASSEMBLY	
1	4A1-7260-000		1	GEAR, 16T/40T	
2	4A1-7261-000		1	GEAR, 16T/45T	
3	4A1-7262-000		1	GEAR, 16T/45T	
4	4A1-7263-000		1	PULLEY, 56T	
5	4H1-6458-000		1	CABLE, SHIFT MOTOR	CN70
6	4K1-1068-000		1	MOTOR, DC24V	M6 CN70
7	FC2-2120-000		3	SCREW, M4X7	
8	FC2-5034-000		2	SCREW,W/WASHER,M3X6	
9	FC2-5827-000		5	CLIP	
10	FS2-1672-000		2	BUSHING	
11	WG8-5362-000		2	IC, TLP1241, PHOTO-INTERRUPTER	PI16,17 CN49,48
12	XF2-1608-040		1	BELT, TIMING	
13	4A1-7264-000		1	FLAG, CLOCK SENSOR	
501	XD3-2200-122		2	PIN,DOWEL	

# FIGURE Q22 DRIVE ASSEMBLY

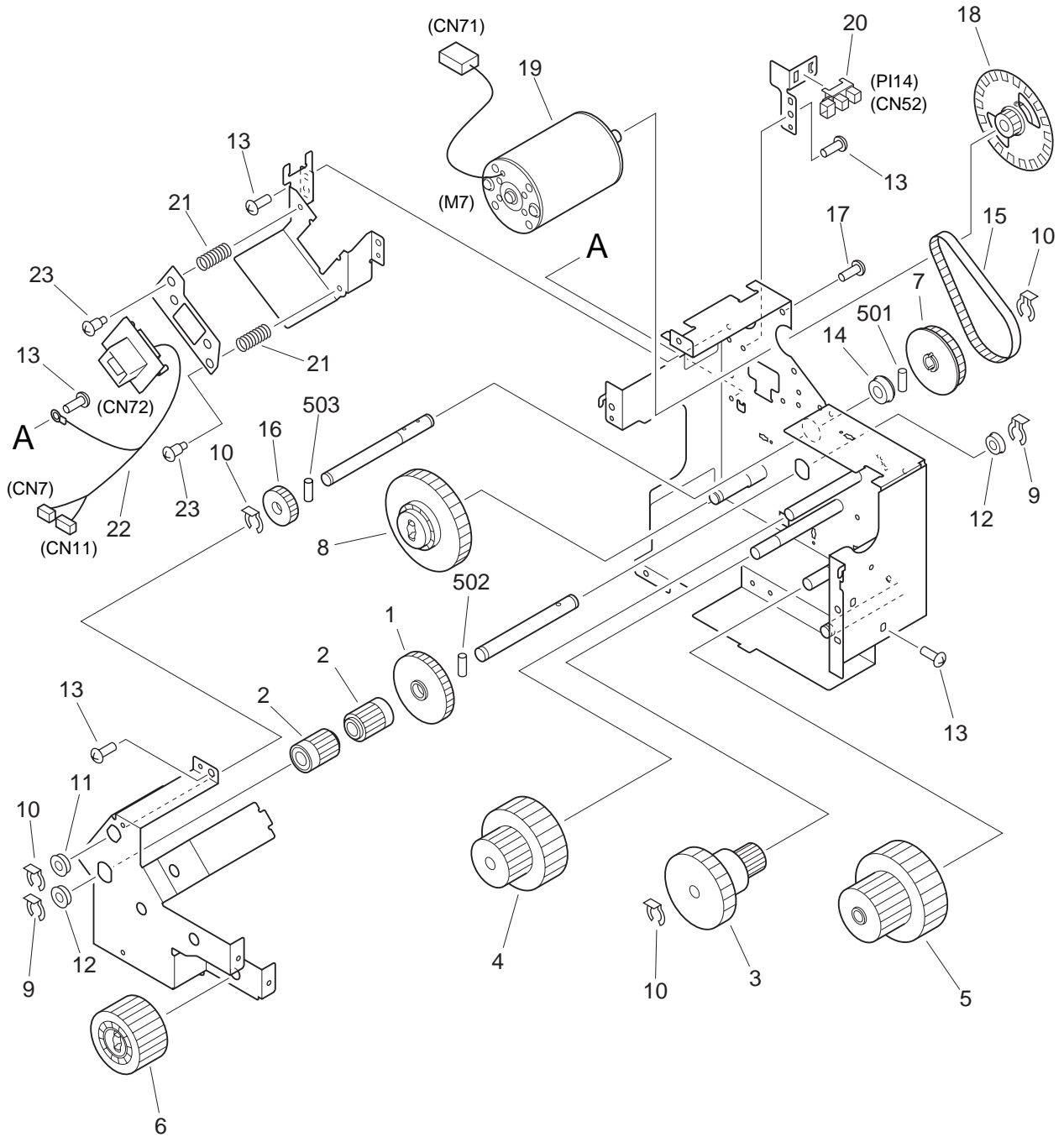




FIGURE & KEY NO.	PART NUMBER	RANK	QTY	DESCRIPTION	SERIAL NUMBER / REMARKS
Q22 -	4G1-4003-000		1	DRIVE ASSEMBLY	
1	4A1-7301-000		1	GEAR, 58T	
2	4A1-7302-000		2	GEAR, 23T	
3	4A1-7303-000		1	GEAR, 17T/65T	
4	4A1-7304-000		1	GEAR, 15T/54T	
5	4A1-7305-000		1	GEAR, 17T/29T	
6	4A1-7306-000		1	GEAR, 20T	
7	4A1-7307-000		1	PULLEY, 45T	
8	4A1-7338-000		1	GEAR, 82T	
9	4A1-7566-000		2	CLIP, SHAFT	
10	4A1-7567-000		4	CLIP, SHAFT	
11	4A1-7572-000		1	BUSHING	
12	4A1-7573-000		2	BUSHING	
13	FC2-2120-000		8	SCREW, M4X7	
14	FS2-1615-000		1	BEARING, BALL	
15	XF2-1807-460		1	BELT, TIMING	
16	4A1-7300-000		1	GEAR, 29T	
17	4S1-9081-000		2	SCREW, M4X6	
18	4A1-7308-000		1	FLAG, CLOCK SENSOR	
19	4K1-1069-000		1	MOTOR, DC24V	M7 CN71
20	WG8-5421-000		1	PHOTO-INTERRUPTER	PI14 CN52
21	4A1-7407-000		2	SPRING, COMPRESSION	
22	4H1-6468-000		1	CABLE, STAPLER	CN7,11,72
23	4S1-9049-000		2	SCREW, STEPPED, M4	
501	XD3-2200-142		1	PIN, DOWEL	
502	XD3-2300-182		1	PIN, DOWEL	
503	XD3-2200-122		1	PIN, DOWEL	

# FIGURE Q24 BUNDLE SUPPORT COVER ASSEMBLY

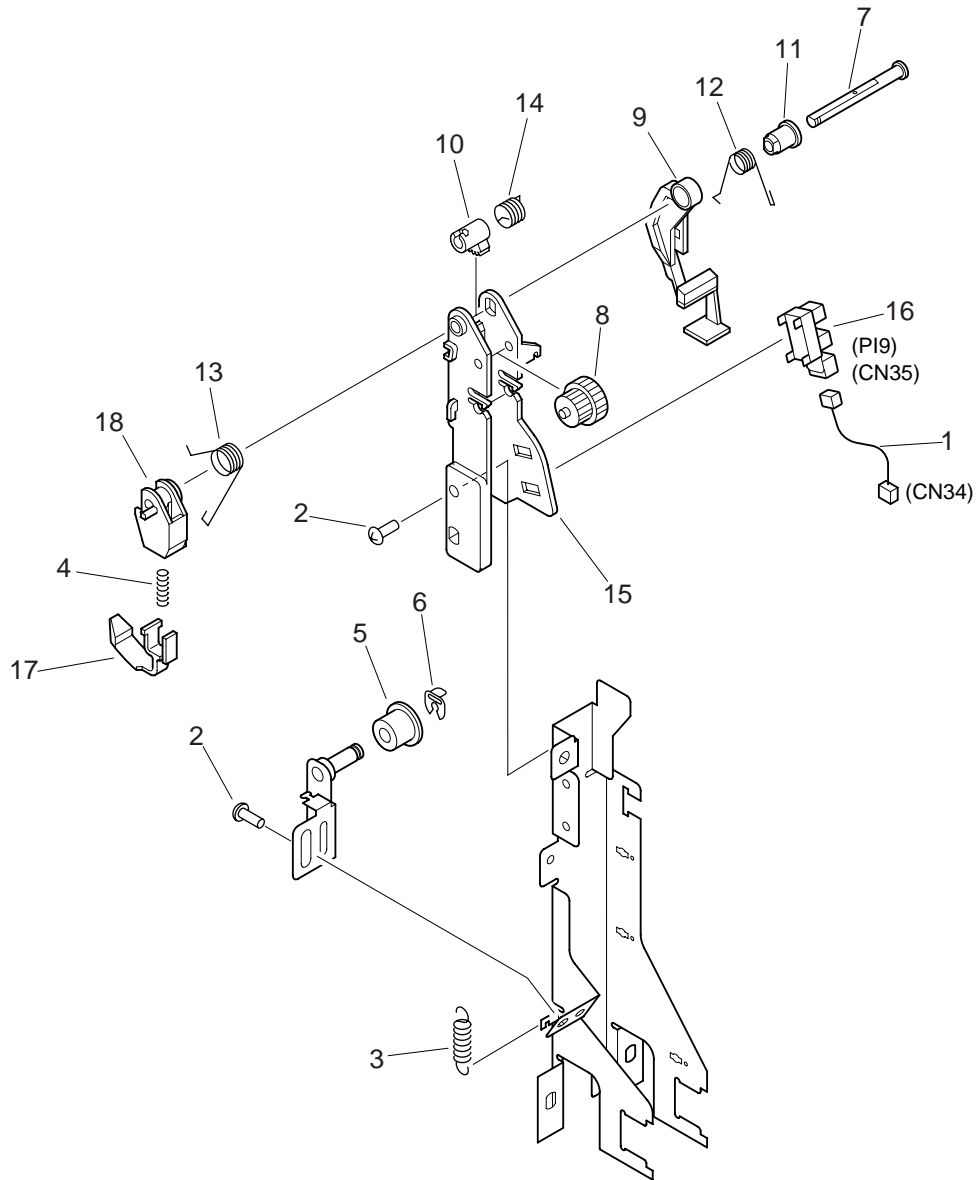
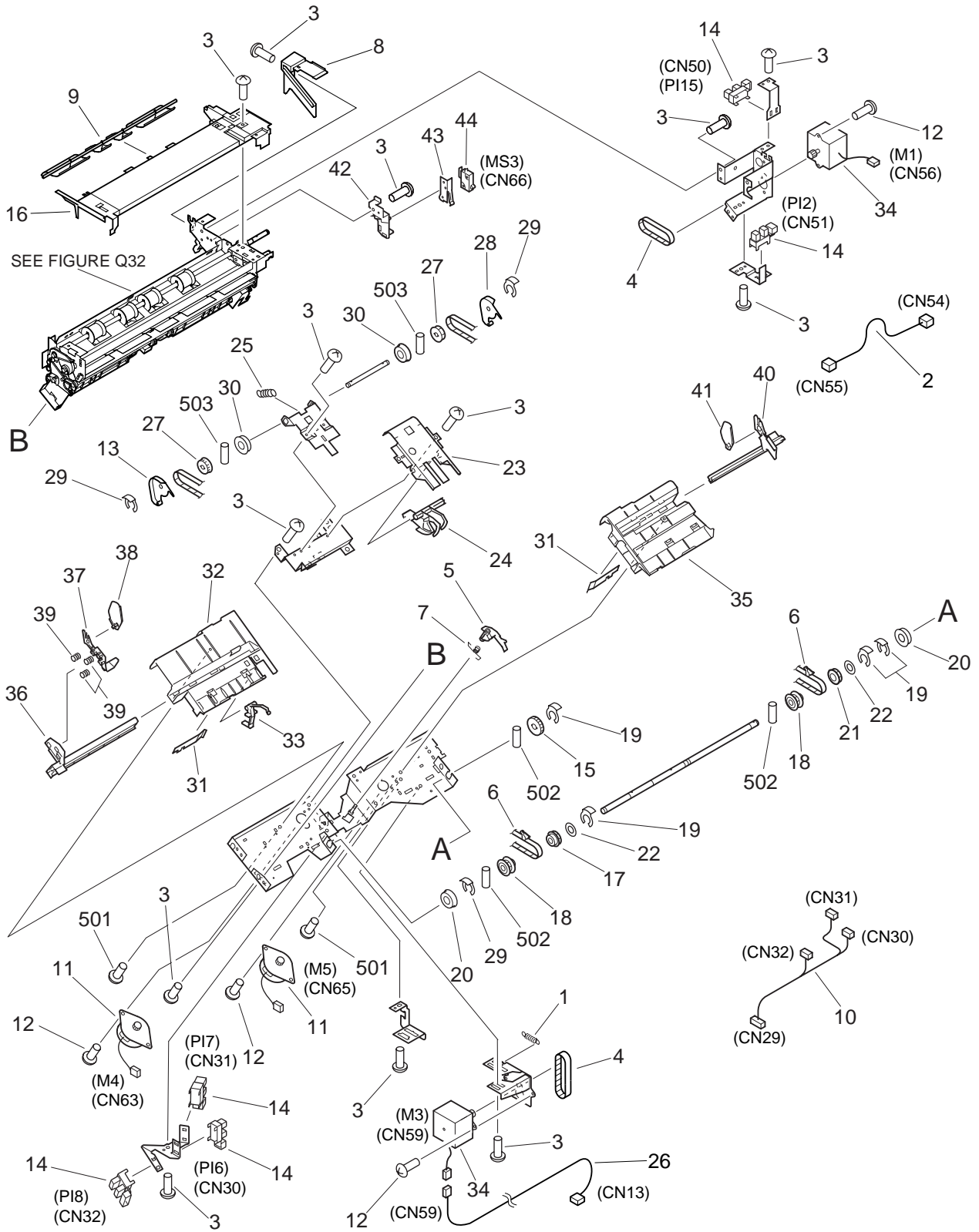


FIGURE & KEY NO.	PART NUMBER	RANK	QTY	DESCRIPTION	SERIAL NUMBER / REMARKS
Q24 -	4G1-4044-000		1	BUNDLE SUPPORT COVER ASSEMBLY	
1	4H1-6454-000		1	CABLE, SENSOR	CN34,35
2	FC2-2120-000		2	SCREW, M4X7	
3	4A1-7416-000		1	SPRING, TENSION	
4	4A1-7420-000		1	SPRING, COMPRESSION	
5	4A1-7371-000		1	ROLLER, TENSIONER	
6	FC2-5827-000		1	CLIP	
7	4A1-7240-000		1	SHAFT, SUPPORT	
8	4A1-7289-000		1	GEAR, 20T/28T	
9	4A1-7292-000		1	FLAG, PAPER SENSOR	
10	4A1-7325-000		1	GEAR, 5T	
11	4A1-7367-000		1	BUSHING	
12	4A1-7421-000		1	SPRING, TORSION	
13	4A1-7422-000		1	SPRING, TORSION	
14	4A1-7423-000		1	SPRING, TORSION	
15	4A1-7526-000		1	HOLDER, SENSOR	
16	WG8-5362-000		1	IC, TLP1241, PHOTO-INTERRUPTER	PI9 CN35
17	4A1-7326-000		1	SUPPORT, PAPER	
18	4A1-7327-000		1	HOLDER, PAPER SUPPORT	

# FIGURE Q30

## DISPOSE ASSEMBLY



NOTE 1: This assembly includes the assembly shown in Figure Q32.

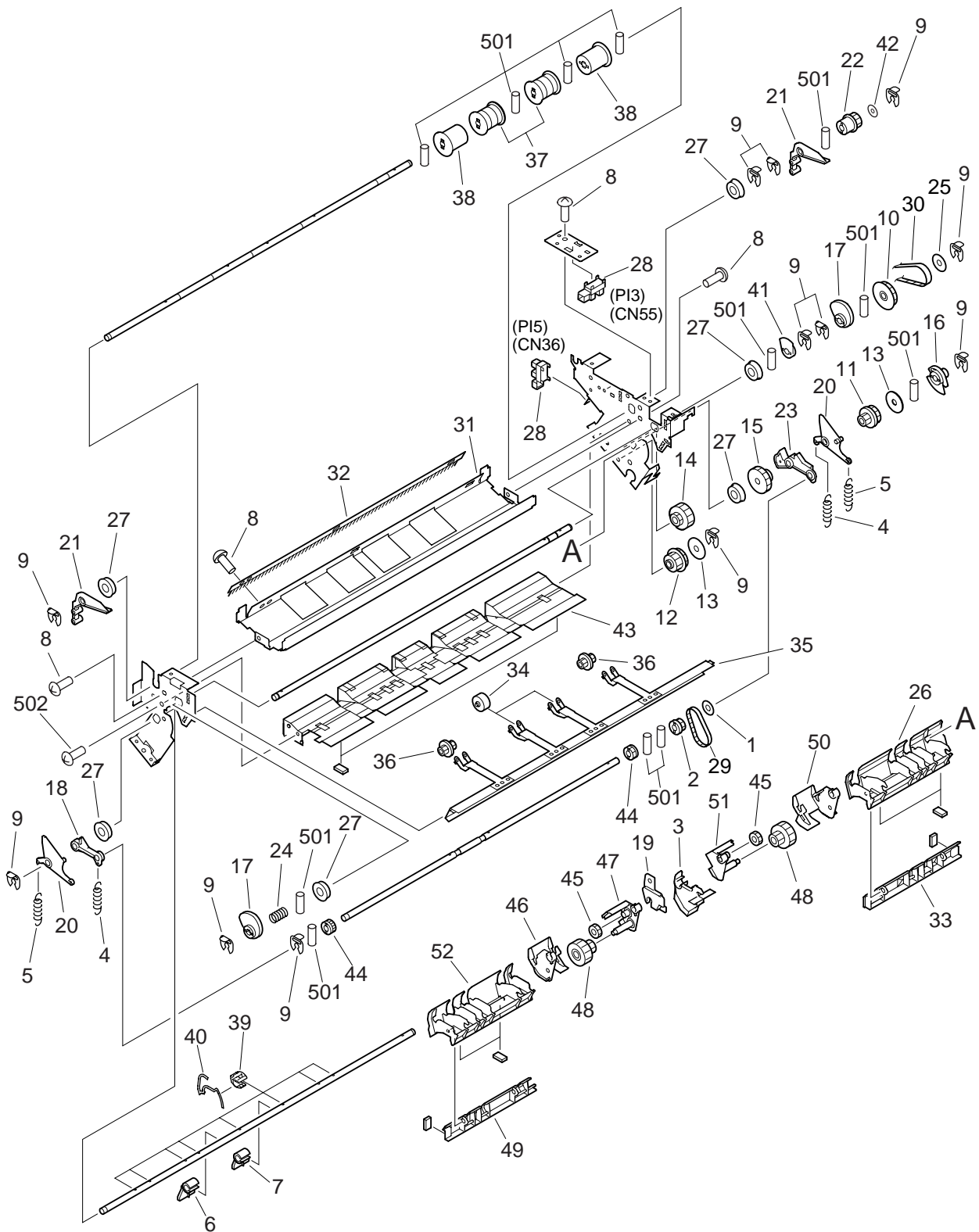
NOTE 2: This assembly does not include the parts shown with key No. 8, 9 and 26.

FIGURE & KEY NO.	PART NUMBER	R A N K	Q' T Y	DESCRIPTION	SERIAL NUMBER / REMARKS
Q30 -	4G1-4010-000		1	DISPOSE ASSEMBLY	SEE NOTE 1
1	4A1-7390-000		1	SPRING, TENSION	
2	4H1-6454-000		1	CABLE, SENSOR	CN54,55
3	FC2-2120-000		18	SCREW, M4X7	
4	XF2-1606-140		2	BELT, TIMING	
5	4A1-7328-000		1	LEVER, BELT SENSOR	
6	4A1-7383-000		2	BELT, TIMING	
7	4A1-7392-000		1	SPRING, TORSION	
8	4A1-7334-000		1	COVER, DISPOSE	SEE NOTE 2
9	4A1-7313-000		1	DEFLECTOR, WEIGHT	SEE NOTE 2
10	4H1-6455-000		1	CABLE, TRAY	CN29-32
11	4K1-1067-000		2	MOTOR, STEPPING	M4,5 CN63,65
12	FC2-5034-000		6	SCREW,W/WASHER,M3X6	
13	4A1-7587-000		1	GUIDE, TRAY, FRONT	
14	WG8-5362-000		5	IC, TLP1241, PHOTO-INTERRUPTER	PI2,6-8,15 CN51,30-32,50
15	4A1-7273-000		1	GEAR, 30T	
16	4A1-7519-000		1	COVER, DISPOSE, SUB	
17	4A1-7368-000		1	PULLEY, 22T	
18	4A1-7381-000		2	ROLLER, BUNDLE, LOWER	
19	4A1-7567-000		5	CLIP, SHAFT	
20	4A1-7572-000		2	BUSHING	
21	4A1-8319-000		1	PULLEY, 22T	
22	4A1-8334-000		2	FLANGE	
23	4A1-7197-000		1	SUPPORT, SENSOR FLAG	
24	4A1-7329-000		1	FLAG, SENSOR	
25	4A1-7402-000		1	SPRING, TENSION	
26	4H1-6464-000		1	CABLE, EJECT MOTOR	SEE NOTE 2 CN13,59
27	4A1-7275-000		2	PULLEY, 22T	
28	4A1-7588-000		1	GUIDE, TRAY, REAR	
29	FC2-5827-000		2	CLIP	

FIGURE & KEY NO.	PART NUMBER	R A N K	Q' T Y	DESCRIPTION	SERIAL NUMBER / REMARKS
Q30 - 30	FS2-1672-000		2	BUSHING	
31	4A1-7209-000		2	SPRING, LEAF	
32	4A1-7324-000		1	GUIDE, PAPER FEED, FRONT	
33	4A1-7514-000		1	FLAG, BUNDLE ROLLER	
34	4K1-1066-000		2	MOTOR, STEPPING	M1,3 CN56,59
35	4A1-7323-000		1	GUIDE, PAPER FEED, REAR	
36	4A1-7314-000		1	RACK, ADJUSTMENT, FRONT	
37	4A1-7315-000		1	COVER, ADJUSTMENT RACK, FRONT	
38	4A1-7316-000		1	COVER, ADJUSTMENT RACK, FRONT	
39	4A1-7391-000		3	SPRING, COMPRESSION	
40	4A1-7319-000		1	RACK, ADJUSTMENT, REAR	
41	4A1-7320-000		1	COVER, ADJUSTMENT RACK, REAR	
42	4A1-7212-000		1	HOLDER, MICROSWITCH	
43	4A1-7575-000		1	COVER, MICROSWITCH	
44	4H1-6449-000		1	MICROSWITCH	MS3 CN66
501	XB4-7401-007		2	SCREW, TAPPING, TRUSS HEAD, M4X10	
502	XD3-2200-122		3	PIN, DOWEL	
503	XD3-2200-102		2	PIN, DOWEL	



# FIGURE Q32 PAPER FEEDER ASSEMBLY



NOTE : This assembly is included in the assembly shown in Figure Q30.

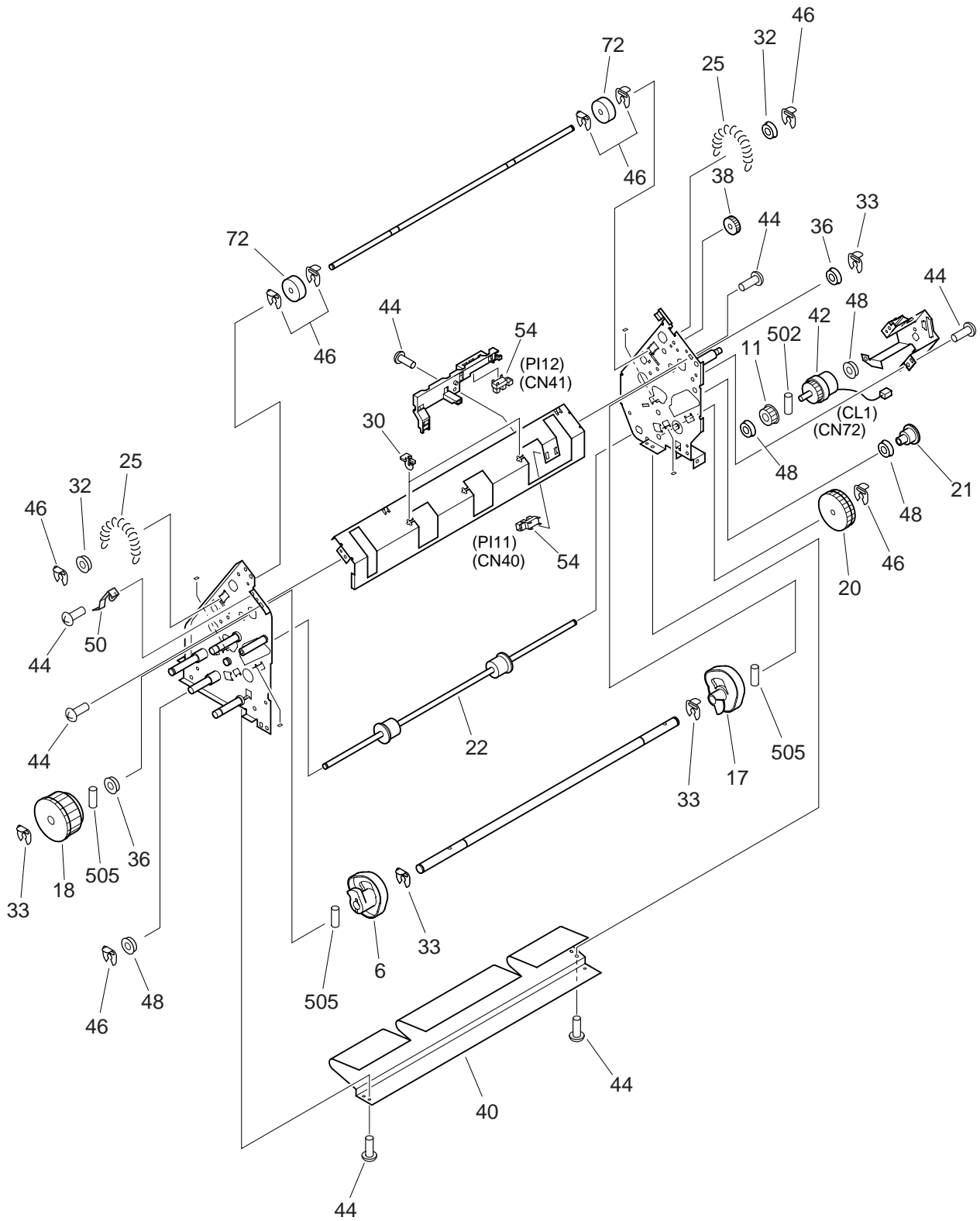


FIGURE & KEY NO.	PART NUMBER	R A N K	Q' T Y	DESCRIPTION	SERIAL NUMBER / REMARKS
Q32 -	4G1-4021-000		1	PAPER FEEDER ASSEMBLY	SEE NOTE
1	4A1-7278-000		1	FLANGE	
2	4A1-7281-000		1	PULLEY, 20T	
3	4A1-7337-000		1	GUIDE, PAPER AUXILIARY	
4	4A1-7380-000		2	SPRING, TENSION	
5	4A1-7401-000		2	SPRING, TENSION	
6	4A1-7529-000		1	CLAW, FRONT	
7	4A1-7538-000		1	CLAW, REAR	
8	FC2-2120-000		4	SCREW, M4X7	
9	FC2-5827-000		12	CLIP	
10	4A1-7271-000		1	PULLEY, 40T	
11	4A1-7272-000		1	PULLEY, 18T/29T	
12	4A1-7274-000		1	GEAR, 20T/PULLEY, 32T	
13	4A1-7276-000		2	FLANGE	
14	4A1-7279-000		1	GEAR, 20T	
15	4A1-7280-000		1	GEAR, 30T/PULLEY, 20T	
16	4A1-7330-000		1	FLAG, SENSOR	
17	4A1-7331-000		2	CAM	
18	4A1-7332-000		1	ARM, LINK, 1	
19	4A1-7346-000		1	SUPPORT, PADDLE SHAFT	
20	4A1-7347-000		2	ARM, LINK, 2	
21	4A1-7348-000		2	ARM, LINK, 3	
22	4A1-7351-000		1	PULLEY, 24T	
23	4A1-7366-000		1	ARM, LINK, 4	
24	4A1-8321-000		1	SPRING, COMPRESSION	
25	4A1-7339-000		1	FLANGE	
26	4A1-7372-000		1	GUIDE, SAFTY, REAR 1	
27	FS2-1672-000		6	BUSHING	
28	WG8-5362-000		2	IC, TLP1241, PHOTO-INTERRUPTER	PI3,5 CN55,36
29	XF2-1604-940		1	BELT, TIMING	

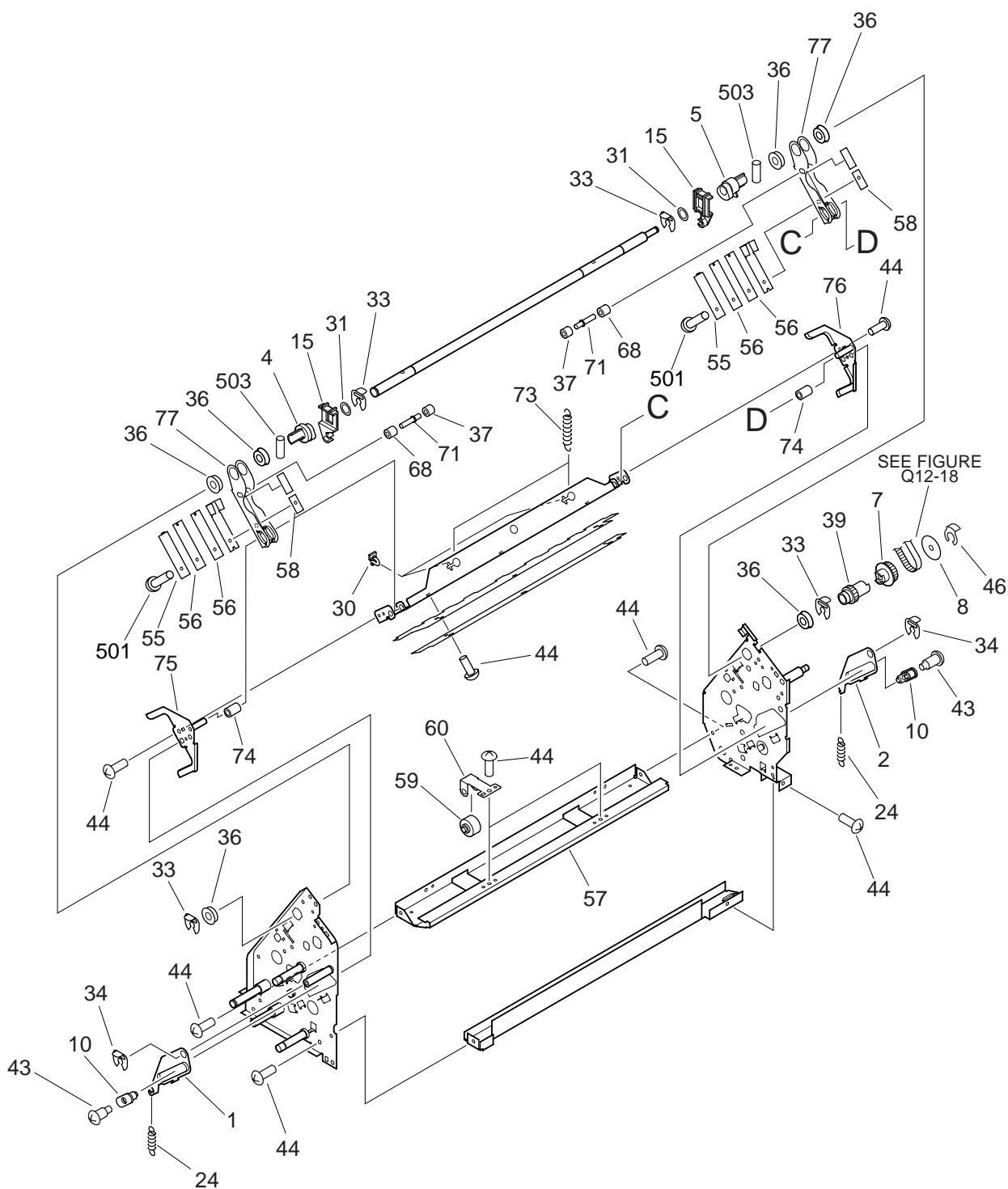
FIGURE & KEY NO.	PART NUMBER	R A N K	Q' T Y	DESCRIPTION	SERIAL NUMBER / REMARKS
Q32 - 30	XF2-1607-640		1	BELT, TIMING	
31	4A1-7194-000		1	GUIDE, PAPER OUTLET, UPPER	
32	4A1-7427-000		1	ELIMINATOR, STATIC CHARGE	
33	4A1-7343-000		1	GUIDE, SAFTY, REAR 2	
34	4A1-7406-000		2	ROLLER, PAPER OUTLET	
35	4A1-7494-000		1	SUPPORT, PAPER OUTLET ROLLER	
36	FB5-0735-000		2	ROLLER, FEED	
37	4A1-7531-000		2	ROLLER, PAPER OUTLET, 1	
38	4A1-7532-000		2	ROLLER, PAPER OUTLET, 2	
39	4A1-7352-000		8	HOLDER, PADDLE ROLLER, 1	
40	4A1-7384-000		8	ROLLER, PADDLE, 1	
41	4A1-7513-000		1	CAM, SENSOR FLAG	
42	4A1-7585-000		1	FLANGE	
43	4A1-7333-000		1	GUIDE, PAPER, LOWER	
44	4A1-7283-000		2	GEAR, 14T	
45	4A1-7282-000		2	GEAR, 14T	
46	4A1-7286-000		1	HOLDER, ROLLER, FRONT 1	
47	4A1-7345-000		1	HOLDER, ROLLER, FRONT 2	
48	4A1-7379-000		2	ROLLER, BUNDLE, UPPER	
49	4A1-7342-000		1	GUIDE, SAFTY, FRONT 2	
50	4A1-7285-000		1	HOLDER, ROLLER, REAR 1	
51	4A1-7344-000		1	HOLDER, ROLLER, REAR 2	
52	4A1-7341-000		1	GUIDE, SAFTY, FRONT 1	
501	XD3-2200-102		21	PIN,DOWEL	
502	XB4-7401-007		2	SCREW,TAPPING,TRUSS HEAD,M4X10	



# FIGURE Q35 FOLD ASSEMBLY (1/3)



# FIGURE Q35 FOLD ASSEMBLY (2/3)



# FIGURE Q35 FOLD ASSEMBLY (3/3)

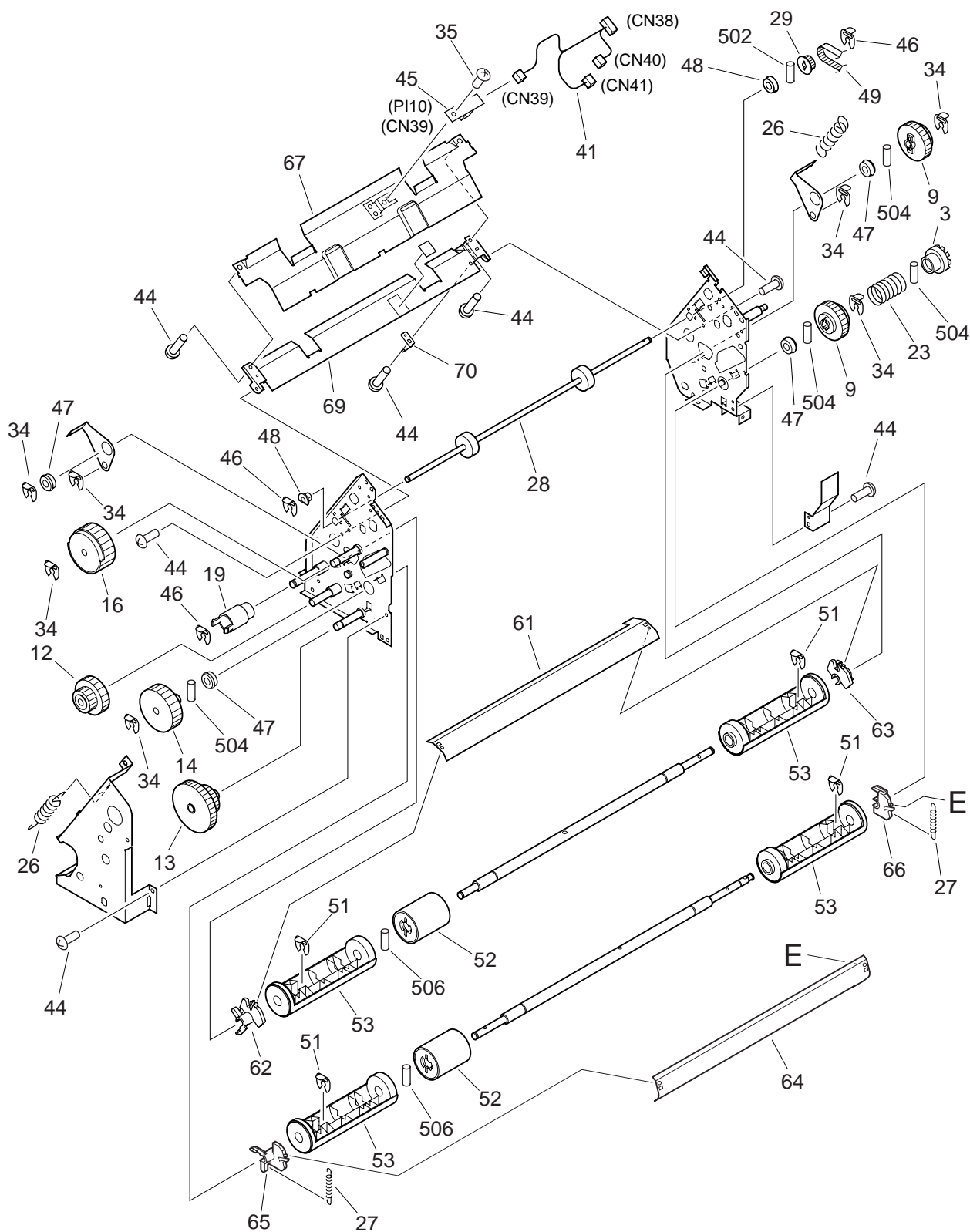


FIGURE & KEY NO.	PART NUMBER	R A N K	Q' T Y	DESCRIPTION	SERIAL NUMBER / REMARKS
Q35 -	4G1-4052-000		1	FOLD ASSEMBLY	
1	4A1-7177-000		1	GUIDE, SWING, FRONT	
2	4A1-7178-000		1	GUIDE, SWING, REAR	
3	4A1-7290-000		1	GEAR, 8T	
4	4A1-7295-000		1	CAM, FRONT	
5	4A1-7296-000		1	CAM, REAR	
6	4A1-7299-000		1	CAM, SADDLE, FRONT	
7	4A1-7335-000		1	PULLEY, 36T	
8	4A1-7339-000		1	FLANGE	
9	4A1-7340-000		2	GEAR, 16T	
10	4A1-7350-000		2	PIN, SADDLE SLIDER	
11	4A1-7357-000		1	PULLEY, 27T	
12	4A1-7358-000		1	GEAR, 16T/41T	
13	4A1-7359-000		1	GEAR, 15T/38T	
14	4A1-7360-000		1	GEAR, 24T	
15	4A1-7361-000		2	HOLDER, ROLLER	
16	4A1-7362-000		1	GEAR, 24T	
17	4A1-7363-000		1	CAM, SADDLE, REAR	
18	4A1-7364-000		1	GEAR, 24T	
19	4A1-7365-000		1	GEAR, 16T	
20	4A1-7376-000		1	GEAR, 16T/42T	
21	4A1-7377-000		1	GEAR, 21T	
22	4A1-7385-000		1	ROLLER, FOLD	
23	4A1-7386-000		1	SPRING, COMPRESSION	
24	4A1-7387-000		2	SPRING, TENSION	
25	4A1-7388-000		2	SPRING, TENSION	
26	4A1-7389-000		2	SPRING, TENSION	
27	4A1-7403-000		2	SPRING, TENSION	
28	4A1-7404-000		1	ROLLER	
29	4A1-7530-000		1	PULLEY, 27T	

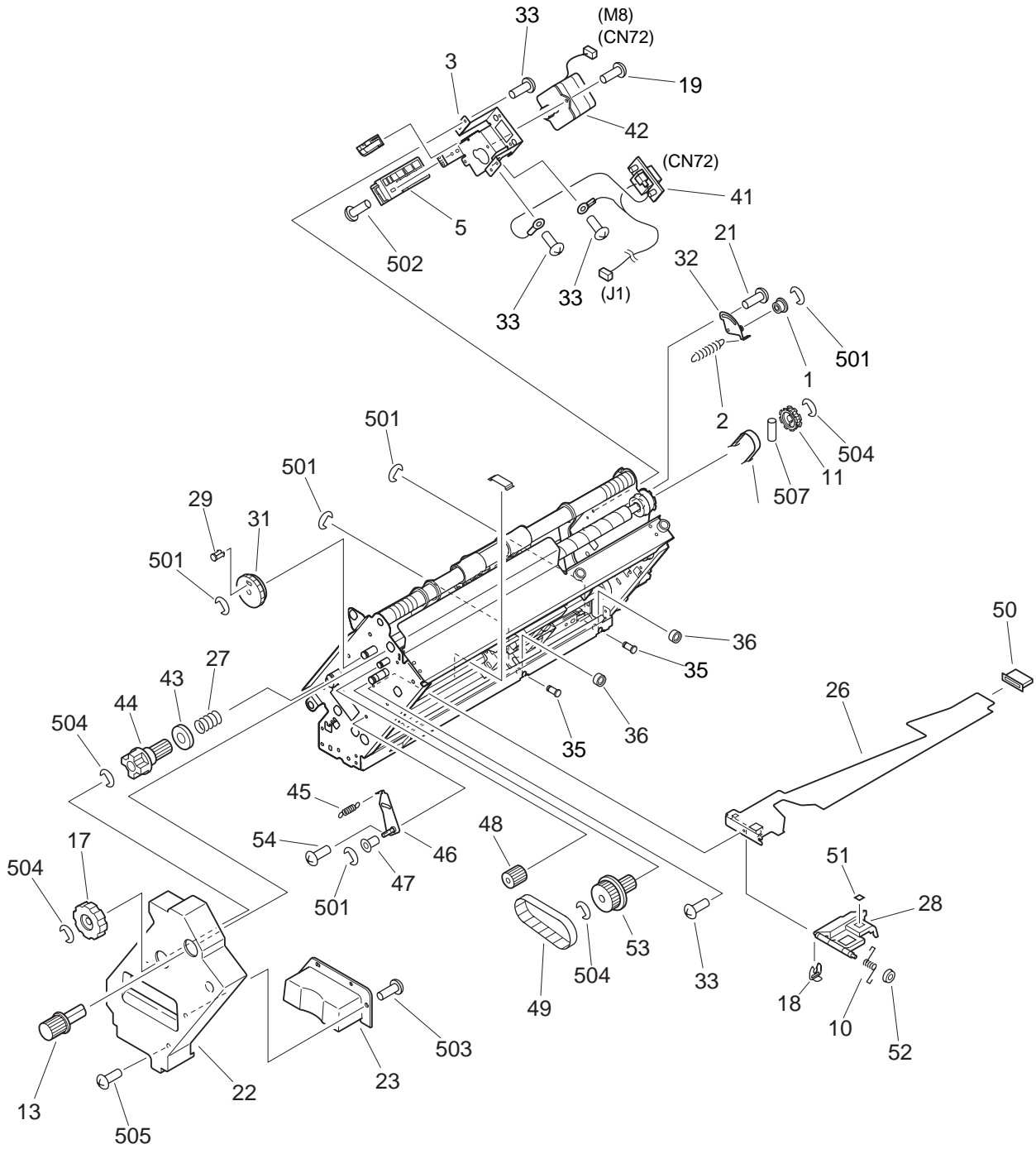
FIGURE & KEY NO.	PART NUMBER	R A N K	Q' T Y	DESCRIPTION	SERIAL NUMBER / REMARKS
Q35 - 30	4A1-7533-000		4	HOOK, SPRING	
31	4A1-7551-000		2	WASHER	
32	4A1-7552-000		2	BUSHING	
33	4A1-7566-000		8	CLIP, SHAFT	
34	4A1-7567-000		9	CLIP, SHAFT	
35	FC2-1175-000		1	SCREW	
36	4A1-7573-000		8	BUSHING	
37	4A1-8329-000		2	ROLLER, LINK	
38	4A1-8330-000		1	GEAR, 18T	
39	4A1-8331-000		1	GEAR, 17T	
40	4A1-8332-000		1	GUIDE, PAPER DELIVERY, LOWER	
41	4H1-6456-000		1	CABLE, CONNECTING	CN38-41
42	4K1-4040-000		1	CLUTCH, ELECTROMAGNETIC	CL1 CN72
43	4S1-9048-000		2	SCREW, STEPPED, M3	
44	FC2-2120-000		30	SCREW, M4X7	
45	4H1-6450-000		1	LED PCB UNIT	PI10 CN39
46	FC2-5827-000		12	CLIP	
47	FS2-1615-000		4	BEARING, BALL	
48	FS2-1672-000		5	BUSHING	
49	XF2-1607-240		1	BELT, TIMING	
50	4A1-7476-000		1	SPRING, LEAF	
51	4A1-7536-000		4	CLIP, SHAFT	
52	4A1-7544-000		2	ROLLER, FOLD	
53	4A1-7545-000		4	ROLLER, FOLD, SUB	
54	WG8-5362-000		2	IC, TLP1241, PHOTO-INTERRUPTER	PI11,12 CN40,41
55	4A1-8327-000		2	SPRING, LEAF	
56	4A1-8326-000		4	SPRING, LEAF	
57	4A1-7480-000		1	GUIDE, DELIVERY PAPER	
58	4A1-8324-000		2	PLATE, REINFORCEMENT	
59	4A1-7322-000		1	ROLLER, FOLD	



FIGURE & KEY NO.	PART NUMBER	R A N K	Q' T Y	DESCRIPTION	SERIAL NUMBER / REMARKS
Q35 - 60	4A1-7481-000		1	HOLDER, DELIVERY ROLLER	
61	4A1-7187-000		1	GUIDE, FOLD ROLLER, 1	
62	4A1-7309-000		1	HOLDER, GUIDE, FRONT 1	
63	4A1-7310-000		1	HOLDER, GUIDE, REAR 1	
64	4A1-7186-000		1	GUIDE, FOLD ROLLER, 2	
65	4A1-7311-000		1	HOLDER, GUIDE, FRONT 2	
66	4A1-7312-000		1	HOLDER, GUIDE, REAR 2	
67	4A1-7207-000		1	GUIDE, PAPER, UPPER	
68	4A1-7297-000		2	ROLLER, LINK	
69	4A1-7204-000		1	GUIDE, PAPER, LOWER	
70	4A1-8322-000		1	SPRING, LEAF, GROUNDING	
71	4A1-7228-000		2	SHAFT, LINK	
72	4A1-7525-000		2	ROLLER	
73	4A1-7546-000		2	SPRING, TENSION	
74	4A1-7298-000		2	ROLLER, SADDLE	
75	4F1-1569-000		1	PLATE, OPENER, FRONT	
76	4F1-1570-000		1	PLATE, OPENER, REAR	
77	4A1-7181-000		2	LINK, COVER	
501	XB1-2401-005		2	SCREW,MACH.,TRUSS HEAD,M4X10	
502	XD3-2200-102		2	PIN,DOWEL	
503	XD3-2200-142		2	PIN,DOWEL	
504	XD3-2300-142		4	PIN,DOWEL	
505	XD3-2300-162		2	PIN,DOWEL	
506	XD3-2300-182		3	PIN,DOWEL	

# FIGURE Q40

## STAPLE ASSEMBLY (1/2)



# FIGURE Q40 STAPLE ASSEMBLY (2/2)

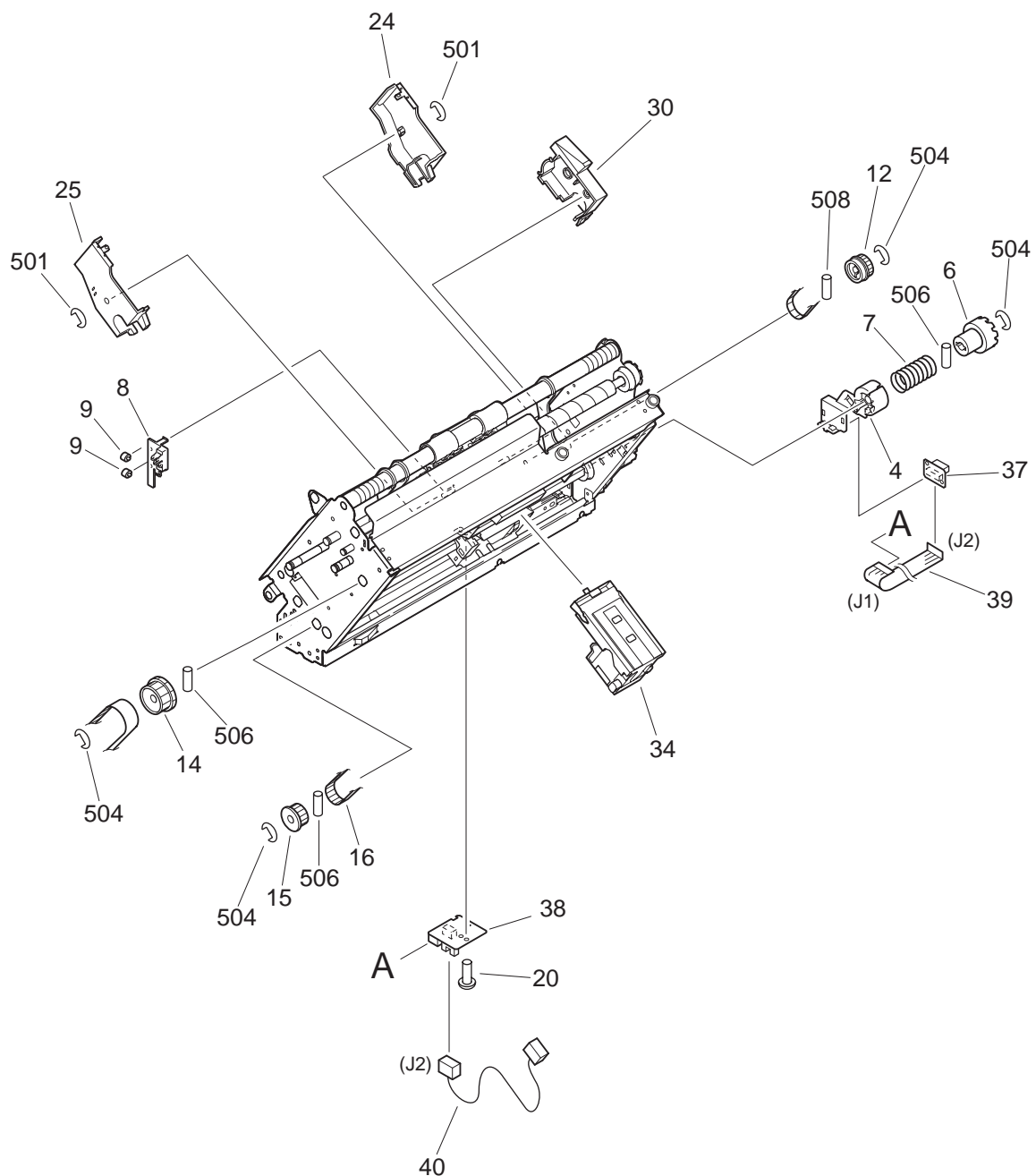


FIGURE & KEY NO.	PART NUMBER	R A N K	Q' T Y	DESCRIPTION	SERIAL NUMBER / REMARKS
Q40 -	4G1-4268-000		1	STAPLE ASSEMBLY	
1	4A1-8206-000		1	ROLLER, TENSION	
2	4A1-8207-000		1	SPRING, TENSION	
3	4A1-8214-000		1	COVER, MOTOR	
4	4A1-8215-000		1	FRAME, COUPLING	
5	4A1-8217-000		1	SUPPORT, CAM STOPPER, 1	
6	4A1-8218-000		1	COUPLING	
7	4A1-8219-000		1	SPRING, COMPRESSION	
8	4A1-7591-000		1	HOLDER, STAPLE GUIDE ROLLER	
9	4A1-7589-000		2	ROLLER, STAPLE GUIDE	
10	4A1-7592-000		1	SPRING, TORSION	
11	4A1-8225-000		1	PULLEY, 38T	
12	4A1-8226-000		1	GEAR, 36T/PULLEY, 38T	
13	4A1-8228-000		1	KNOB, STAPLE MOVABLE	
14	4A1-8229-000		1	GEAR, 42T/PULLEY, 32T	
15	4A1-8230-000		1	PULLEY, 24T	
16	XF2-1809-710		1	BELT, TIMING	
17	4A1-8233-000		1	KNOB, JAM CLEARING	
18	FC3-0661-000		1	CLIP	
19	FC2-5034-000		2	SCREW,W/WASHER,M3X6	
20	FC2-5035-000		1	SCREW,W/WASHER,M3X6	
21	4S1-9076-000		1	SCREW,M3X8	
22	4A1-8238-000		1	PANEL, FRONT	
23	4A1-8239-000		1	COVER, HANDLE	
24	4A1-8265-000		1	COVER, SIDE, RIGHT	
25	4A1-8264-000		1	COVER, SIDE, LEFT	
26	4A1-8240-000		1	GUIDE, PAPER	
27	4B1-0743-000		1	SPRING, COMPRESSION	
28	4A1-7581-000		1	GUIDE, PAPER, SUB	
29	4A1-7584-000		1	PIN, MARKER	

FIGURE & KEY NO.	PART NUMBER	RANK	QTY	DESCRIPTION	SERIAL NUMBER / REMARKS
Q40 - 30	4A1-8263-000		1	COVER, GEAR	
31	4A1-7583-000		1	GEAR, 42T	
32	4F1-1679-000		1	PLATE, TENSIONER	
33	FC3-0779-000		AR	SCREW, TAPPING, M3X6	
34	4A1-8341-000		1	STAPLE CARTRIDGE UNIT	
35	4A1-8210-000		2	PIN, SLIDE	
36	4A1-8198-000		2	ROLLER	
37	4H1-6502-000		1	STAPLER BASE PCB ASSEMBLY	
38	4H1-6503-000		1	STAPLER IN PCB ASSEMBLY	
39	4H1-6504-000		1	CABLE, STAPLER	J1,2
40	4H1-6505-000		1	CABLE, STAPLE, 1	J2
41	4H1-6506-000		1	CABLE, STAPLE, 2	CN72,J1
42	4K1-1070-000		1	MOTOR, STEPPING	M8 CN72
43	4B1-0754-000		1	FLANGE	
44	4B1-0744-000		1	GEAR	
45	4B1-0748-000		1	SPRING, TENSION	
46	4F1-2053-000		1	SUPPORT, STAPLE TENSIONER	
47	4B1-0746-000		1	ROLLER, TENSIONER	
48	4A1-8232-000		1	GEAR, 18T/66T	
49	XF2-1804-070		1	BELT, TIMING	
50	4B1-0742-000		1	GUIDE	
51	4A1-7590-000		1	PAD, STAPLE GUIDE	
52	RA2-2452-000		1	BUSHING	
53	4B1-0740-000		1	GEAR, 16T/PULLEY, 29T	
54	FC2-2120-000		1	SCREW, M4X7	
501	XD2-1100-502		4	RING,E	
502	XB1-2300-605		1	SCREW, MACH., TRUSS HEAD, M3X6	
503	XB4-7401-007		2	SCREW, TAPPING, TRUSS HEAD, M4X10	
504	XD2-1100-642		AR	RING,E	
505	XB1-2400-607		AR	SCREW, MACH., TRUSS HEAD, M4X6	

FIGURE & KEY NO.	PART NUMBER	R A N K	Q' T Y	DESCRIPTION	SERIAL NUMBER / REMARKS
Q40 - 506	XD3-2300-122		AR	PIN,DOWEL	
507	XD3-2300-142		AR	PIN,DOWEL	
508	XD3-2200-142		1	PIN,DOWEL	



# FIGURE Q90

## DC CONTROLLER PCB ASSEMBLY

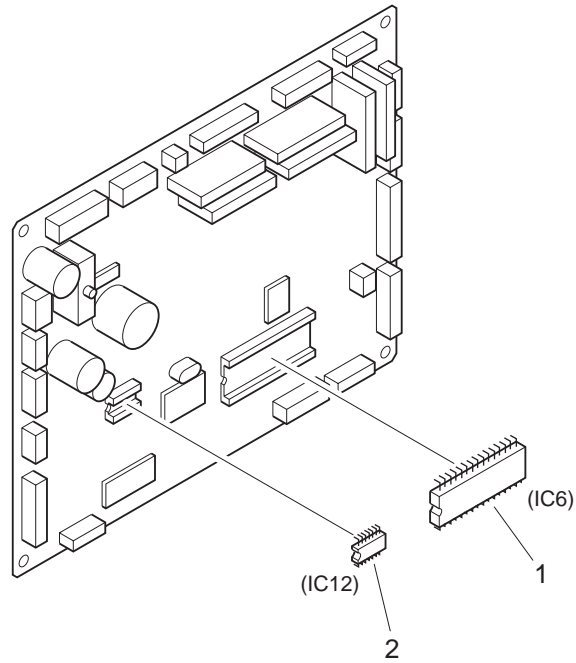
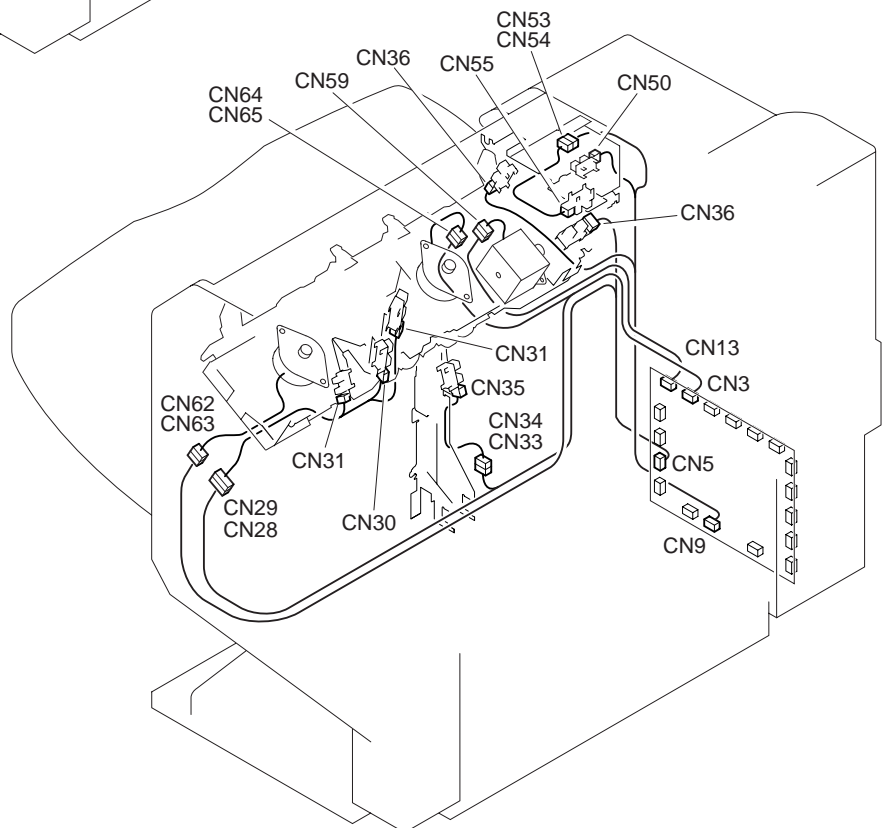
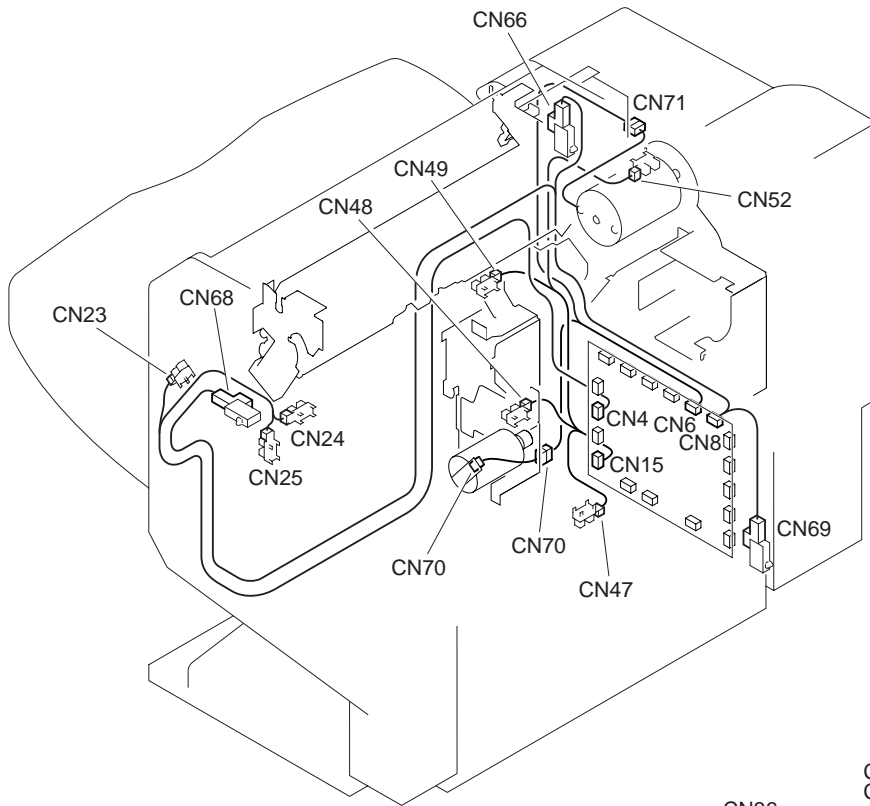


FIGURE & KEY NO.	PART NUMBER	RANK	QTY	DESCRIPTION	SERIAL NUMBER / REMARKS
Q90 -	4G1-1242-000		1	DC CONTROLLER PCB ASSEMBLY	
1	4H1-6492-000		1	IC, M27C1001-80XF, EP-ROM	IC6
2	WA7-0484-000		1	IC, S-93C46ADP, EP-ROM	IC12
-----					
-----					



# FIGURE QB1

## LIST OF CONNECTORS (1/2)



# FIGURE QB1

## LIST OF CONNECTORS (2/2)

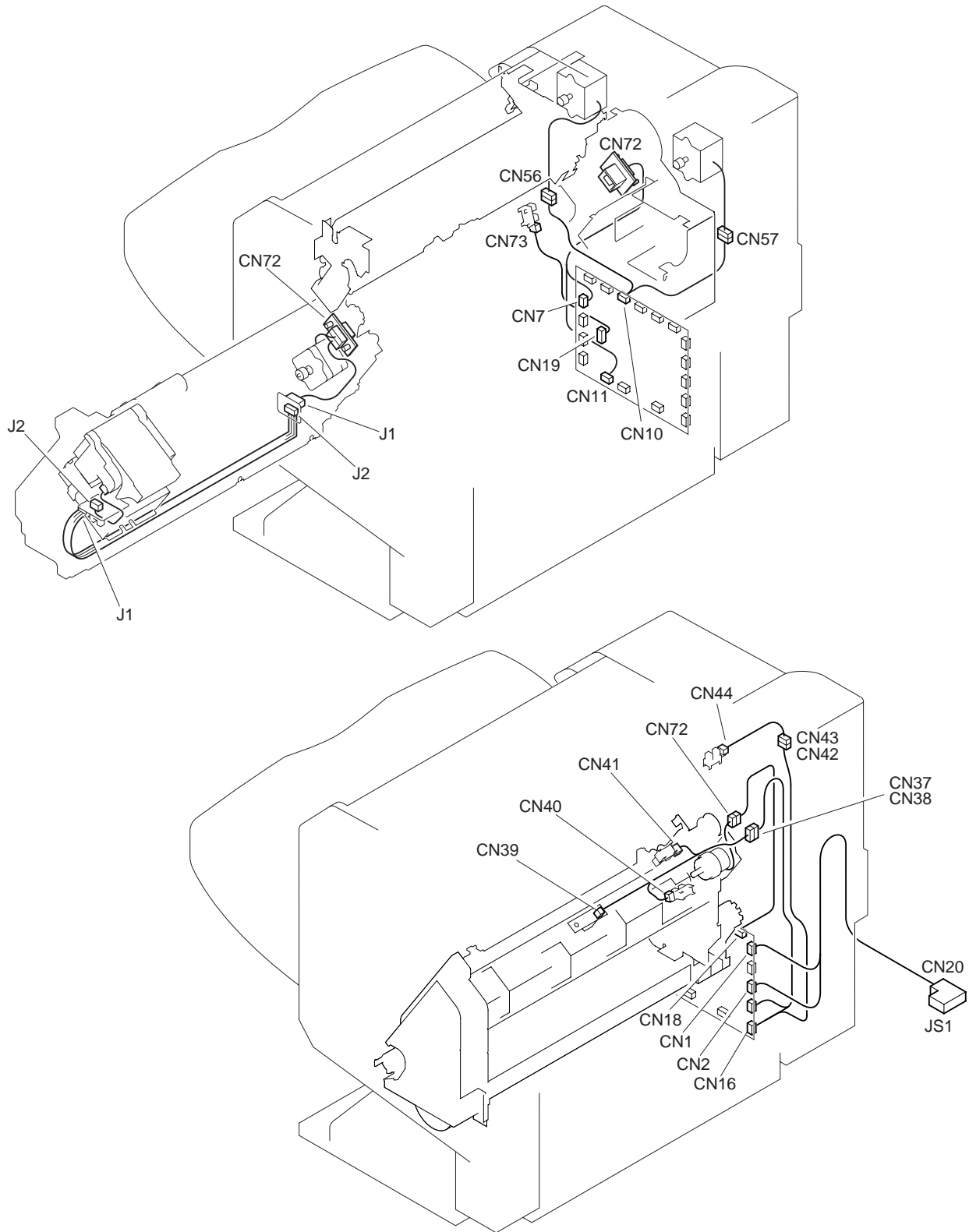


FIGURE & KEY NO.	PART NUMBER	R A N K	Q' T Y	DESCRIPTION	SERIAL NUMBER / REMARKS
Q B1 -	NPN		RF	LIST OF CONNECTORS	
CN1	PCB			DC CONTROLLER	
	4H1-6451-000		1	CABLE, INTERFACE	
CN2	PCB			DC CONTROLLER	
	4H1-6451-000		1	CABLE, INTERFACE	
CN3	PCB			DC CONTROLLER	
	4H1-6465-000		1	CABLE, JOG MOTOR	
CN4	PCB			DC CONTROLLER	
	4H1-6452-000		1	CABLE, FRONT DOOR SENSOR	
CN5	PCB			DC CONTROLLER	
CN6	PCB			DC CONTROLLER	
	4H1-6453-000		1	CABLE, LEVER TRAY SENSOR	
	4H1-6467-000		1	CABLE, DC MOTOR	
CN7	PCB			DC CONTROLLER	
	4H1-6468-000		1	CABLE, STAPLER	
CN8	PCB			DC CONTROLLER	
	4H1-6466-000		1	CABLE, SWITCH	
CN9	PCB			DC CONTROLLER	
	4H1-6462-000		1	CABLE, SENSOR, 3	
CN10	PCB			DC CONTROLLER	
CN11	PCB			DC CONTROLLER	
	4H1-6463-000		1	CABLE, FEED PADDLE MOTOR	
	4H1-6468-000		1	CABLE, STAPLER	
CN12	SYS			PUNCHER UNIT	
	PCB			DC CONTROLLER	
CN13	PCB			DC CONTROLLER	
	4H1-6464-000		1	CABLE, EJECT MOTOR	
CN14	SYS			PUNCHER UNIT	
	PCB			DC CONTROLLER	
CN15	PCB			DC CONTROLLER	

FIGURE & KEY NO.	PART NUMBER	R A N K	Q' T Y	DESCRIPTION	SERIAL NUMBER / REMARKS
Q B1 - CN15	4H1-6460-000		1	CABLE, SENSOR, 1	
CN16	PCB			DC CONTROLLER	
	4H1-6461-000		1	CABLE, SENSOR, 2	
CN18	PCB			DC CONTROLLER	
	4H1-6511-000		1	CABLE, BIND CLUTCH	
CN19	PCB			DC CONTROLLER	
	4H1-6512-000		1	CABLE, STACK SENSOR	
CN20	SYS			TO COPIER	
	4H1-6451-000		1	CABLE, INTERFACE	
CN23	NPN			FRONT JOG HOME POSITION SENSOR	PI4
CN24	4H1-6452-000		1	CABLE, FRONT DOOR SENSOR	
	NPN			TOP COVER SENSOR	PI23
	4H1-6452-000		1	CABLE, FRONT DOOR SENSOR	
CN25	NPN			FRONT DOOR SENSOR	PI22
	4H1-6452-000		1	CABLE, FRONT DOOR SENSOR	
CN28	4H1-6453-000		1	CABLE, LEVER TRAY SENSOR	
CN29	4H1-6455-000		1	CABLE, TRAY	
CN30	NPN			ADJUSTMENT TRAY SENSOR	PI6
	4H1-6455-000		1	CABLE, TRAY	
CN31	NPN			EJECT BELT H. POSITION SENSOR	PI7
CN32	4H1-6455-000		1	CABLE, TRAY	
	NPN			TRAY PAPER EMPTY SENSOR	PI8
	4H1-6455-000		1	CABLE, TRAY	
CN33	4H1-6453-000		1	CABLE, LEVER TRAY SENSOR	
CN34	4H1-6454-000		1	CABLE, SENSOR	
CN35	NPN			LEVEL SENSOR	PI9
	4H1-6454-000		1	CABLE, SENSOR	
CN36	NPN			REAR JOG HOME POSITION SENSOR	PI5
	4H1-6453-000		1	CABLE, LEVER TRAY SENSOR	
	NPN			REAR JOG HOME POSITION SENSOR	PI5

FIGURE & KEY NO.	PART NUMBER	R A N K	Q' T Y	DESCRIPTION	SERIAL NUMBER / REMARKS
Q B1 - CN36	4H1-6462-000		1	CABLE, SENSOR, 3	
CN37	4H1-6461-000		1	CABLE, SENSOR, 2	
CN38	4H1-6456-000		1	CABLE, CONNECTING	
CN39	NPN			BIND POSITION SENSOR	PI10
	4H1-6456-000		1	CABLE, CONNECTING	
CN40	NPN			BIND HOME POSITION SENSOR	PI11
	4H1-6456-000		1	CABLE, CONNECTING	
CN41	NPN			BIND ROLLER H. POSITION SENSOR	PI12
	4H1-6456-000		1	CABLE, CONNECTING	
CN42	4H1-6461-000		1	CABLE, SENSOR, 2	
CN43	4H1-6454-000		1	CABLE, SENSOR	
CN44	NPN			ENTRANCE SENSOR	PI1
	4H1-6454-000		1	CABLE, SENSOR	
CN47	NPN			BIND EMPTY SENSOR	PI13
	4H1-6460-000		1	CABLE, SENSOR, 1	
CN48	NPN			SHIFT CLOCK SENSOR	PI17
	4H1-6460-000		1	CABLE, SENSOR, 1	
CN49	NPN			SHIFT DOWN LIMIT SENSOR	PI16
	4H1-6460-000		1	CABLE, SENSOR, 1	
CN50	NPN			SHIFT UP LIMIT SENSOR	PI15
	4H1-6462-000		1	CABLE, SENSOR, 3	
CN52	NPN			BIND CLOCK SENSOR	PI14
	4H1-6460-000		1	CABLE, SENSOR, 1	
CN53	4H1-6462-000		1	CABLE, SENSOR, 3	
CN54	4H1-6454-000		1	CABLE, SENSOR	
CN55	NPN			BUNDLE ROLLER H.P. SENSOR	PI3
	4H1-6454-000		1	CABLE, SENSOR	
CN56	NPN			PAPER FEED MOTOR	M1
	4H1-6463-000		1	CABLE, FEED PADDLE MOTOR	
CN57	NPN			PADDLE MOTOR	M2

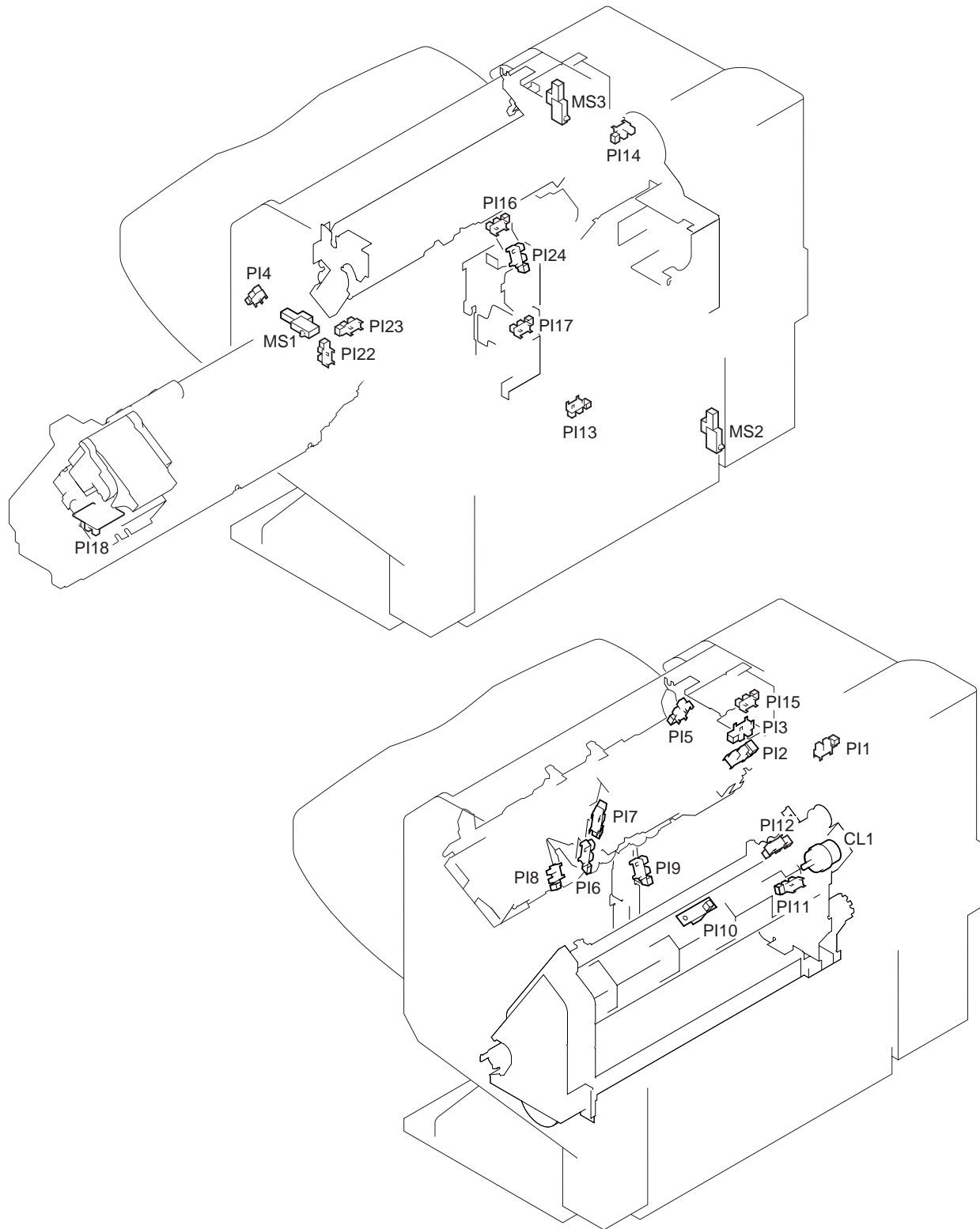
FIGURE & KEY NO.	PART NUMBER	R A N K	Q' T Y	DESCRIPTION	SERIAL NUMBER / REMARKS
Q B1 - CN57	4H1-6463-000		1	CABLE, FEED PADDLE MOTOR	
CN59	NPN			EJECT MOTOR	M3
	4H1-6464-000		1	CABLE, EJECT MOTOR	
CN62	4H1-6465-000		1	CABLE, JOG MOTOR	
CN63	NPN			FRONT JOG MOTOR	M4
CN64	4H1-6465-000		1	CABLE, JOG MOTOR	
CN65	NPN			REAR JOG MOTOR	M5
CN66	NPN			STAPLER SAFETY SWITCH	MS3
	4H1-6466-000		1	CABLE, SWITCH	
CN68	NPN			FRONT DOOR SWITCH	MS1
	4H1-6466-000		1	CABLE, SWITCH	
CN69	NPN			JOINT SWITCH	MS2
	4H1-6466-000		1	CABLE, SWITCH	
CN70	4H1-6458-000		1	CABLE, SHIFT MOTOR	
	4H1-6467-000		1	CABLE, DC MOTOR	
	NPN			SHIFT MOTOR	M6
	4H1-6458-000		1	CABLE, SHIFT MOTOR	
CN71	NPN			BIND MOTOR	M7
	4H1-6467-000		1	CABLE, DC MOTOR	
CN72	NPN			BIND CLUTCH	CL1
	4H1-6511-000		1	CABLE, BIND CLUTCH	
	NPN			SLIDE MOTOR	M8
	4H1-6468-000		1	CABLE, STAPLER	
	4H1-6506-000		1	CABLE, STAPLE, 2	
CN73	NPN			STACK SENSOR	PI24
J1	4H1-6512-000		1	CABLE, STACK SENSOR	
	PCB			STAPLER BASE	
	4H1-6504-000		1	CABLE, STAPLER	
	PCB			STAPLER IN	
	4H1-6506-000		1	CABLE, STAPLE, 2	

FIGURE & KEY NO.	PART NUMBER	R A N K	Q' T Y	DESCRIPTION	SERIAL NUMBER / REMARKS
Q B1 - J2	PCB			STAPLER BASE	
	4H1-6504-000		1	CABLE, STAPLER	
	PCB			STAPLER IN	
	4H1-6505-000		1	CABLE, STAPLE, 1	
JS1	SYS			TO COPIER	
	4H1-6451-000		1	CABLE, INTERFACE	





# FIGURE QB2 LIST OF ELECTRIC PARTS (1/2)



# FIGURE QB2 LIST OF ELECTRIC PARTS (2/2)

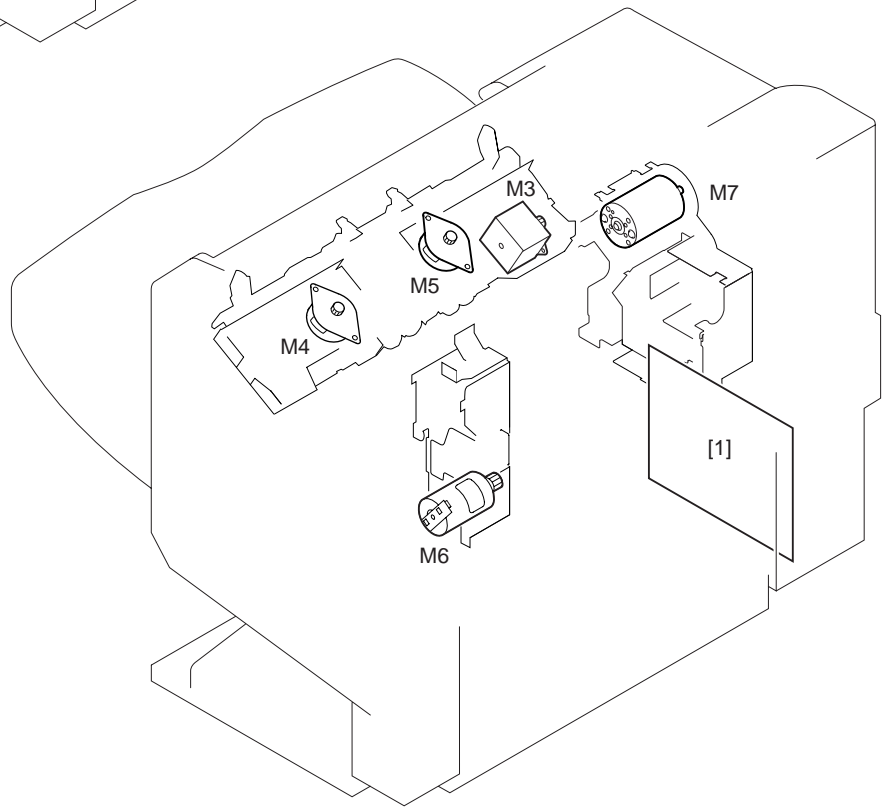
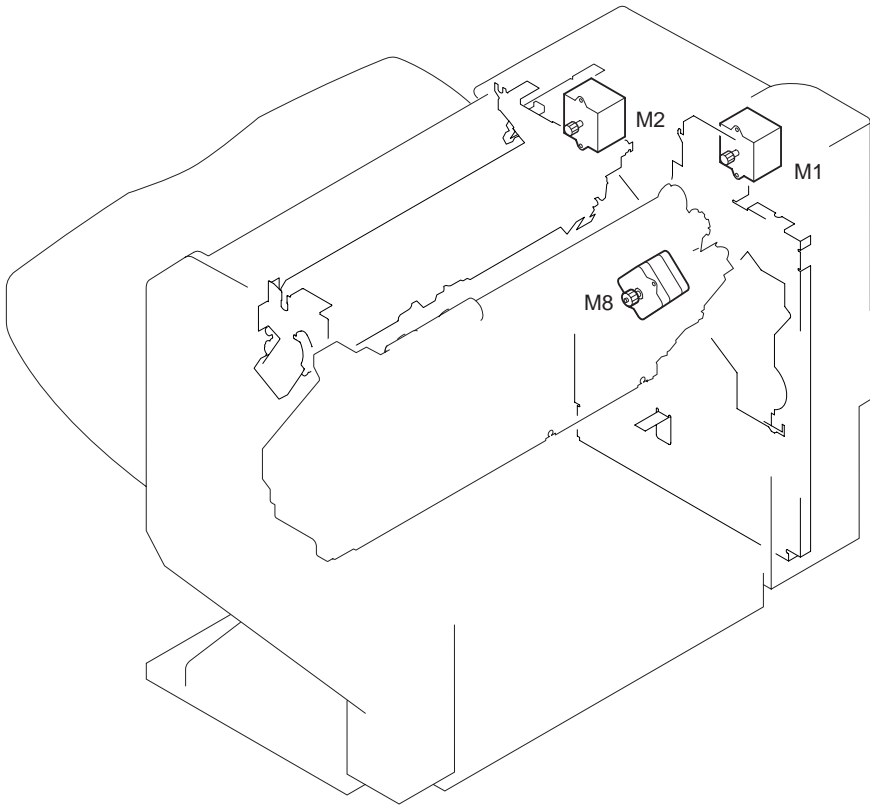


FIGURE & KEY NO.	PART NUMBER	R A N K	Q' T Y	DESCRIPTION	SERIAL NUMBER / REMARKS
Q B2 -	NPN			LIST OF ELECTRIC PARTS	
1	4G1-1242-000		1	DC CONTROLLER PCB ASSEMBLY	
CL1	4K1-4040-000		1	CLUTCH, ELECTROMAGNETIC	
M1	4K1-1066-000		1	MOTOR, STEPPING	
M2	4K1-1065-000		1	MOTOR, STEPPING	
M3	4K1-1066-000		1	MOTOR, STEPPING	
M4	4K1-1067-000		1	MOTOR, STEPPING	
M5	4K1-1067-000		1	MOTOR, STEPPING	
M6	4K1-1068-000		1	MOTOR, DC24V	
M7	4K1-1069-000		1	MOTOR, DC24V	
M8	4K1-1070-000		1	MOTOR, STEPPING	
MS1	4H1-6449-000		1	MICROSWITCH	
MS2	4H1-6449-000		1	MICROSWITCH	
MS3	4H1-6449-000		1	MICROSWITCH	
PI1	WG8-5362-000		1	IC, TLP1241, PHOTO-INTERRUPTER	
PI2	WG8-5362-000		1	IC, TLP1241, PHOTO-INTERRUPTER	
PI3	WG8-5362-000		1	IC, TLP1241, PHOTO-INTERRUPTER	
PI4	WG8-5362-000		1	IC, TLP1241, PHOTO-INTERRUPTER	
PI5	WG8-5362-000		1	IC, TLP1241, PHOTO-INTERRUPTER	
PI6	WG8-5362-000		1	IC, TLP1241, PHOTO-INTERRUPTER	
PI7	WG8-5362-000		1	IC, TLP1241, PHOTO-INTERRUPTER	
PI8	WG8-5362-000		1	IC, TLP1241, PHOTO-INTERRUPTER	
PI9	WG8-5362-000		1	IC, TLP1241, PHOTO-INTERRUPTER	
PI10	4H1-6450-000		1	LED PCB UNIT	
PI11	WG8-5362-000		1	IC, TLP1241, PHOTO-INTERRUPTER	
PI12	WG8-5362-000		1	IC, TLP1241, PHOTO-INTERRUPTER	
PI13	WG8-5362-000		1	IC, TLP1241, PHOTO-INTERRUPTER	
PI14	WG8-5421-000		1	PHOTO-INTERRUPTER	
PI15	WG8-5362-000		1	IC, TLP1241, PHOTO-INTERRUPTER	
PI16	WG8-5362-000		1	IC, TLP1241, PHOTO-INTERRUPTER	

FIGURE & KEY NO.	PART NUMBER	RANK	QTY	DESCRIPTION	SERIAL NUMBER / REMARKS
Q B2 - PI17	WG8-5362-000		1	IC, TLP1241, PHOTO-INTERRUPTER	
PI18	4H1-6503-000		1	STAPLER IN PCB ASSEMBLY	
PI22	WG8-5362-000		1	IC, TLP1241, PHOTO-INTERRUPTER	
PI23	WG8-5421-000		1	PHOTO-INTERRUPTER	
PI24	WG8-5421-000		1	PHOTO-INTERRUPTER	

# Puncher Unit-J1/K1/G1/H1

## Puncher Unit-J1

[ F25 - 7702      2-HOLE      XEJ00001 - ]

## Puncher Unit-K1

[ F25 - 7712      2/3-HOLE      XEK00001 - ]

## Puncher Unit-G1

[ F25 - 7722      4-HOLE FRN      XEL00001 - ]

## Puncher Unit-H1

[ F25 - 7732      4-HOLE SWD      XEM00001 - ]

# CONTENTS

QA. ASSEMBLY LOCATION DIAGRAM

Q13. PUNCHER ASSEMBLY

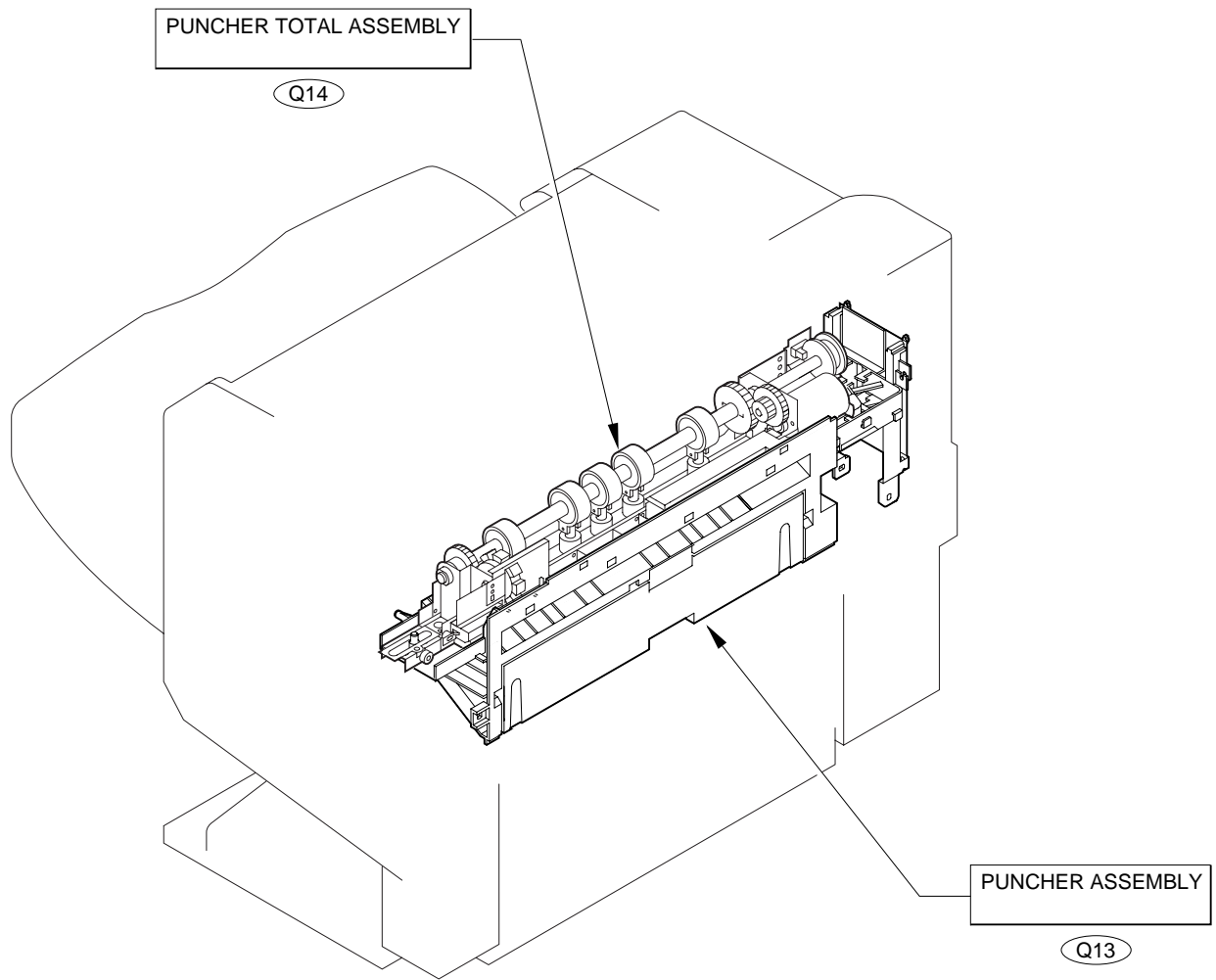
Q14. PUNCHER TOTAL ASSEMBLY

QB1. LIST OF CONNECTORS

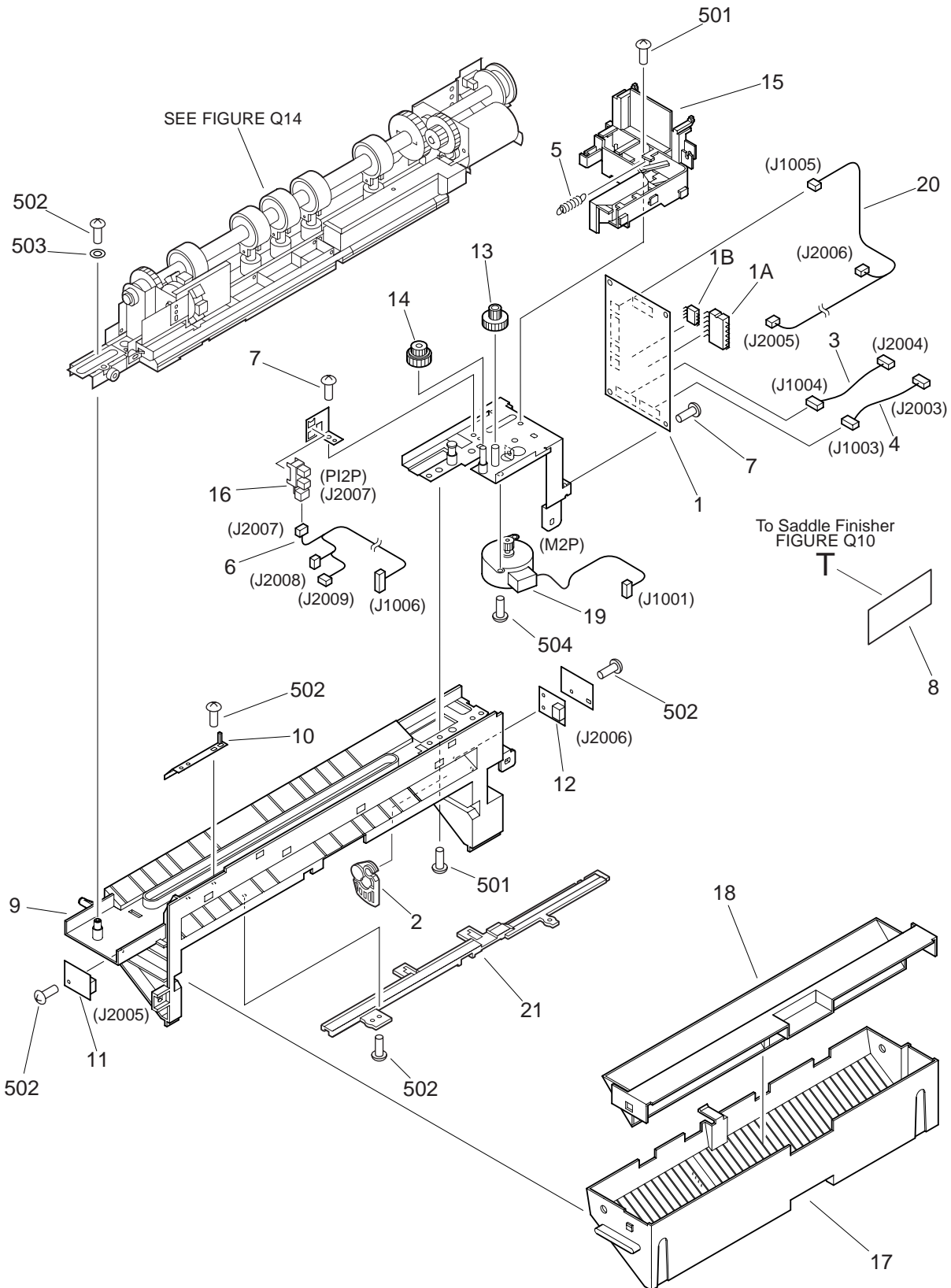
QB2. LIST OF ELECTRIC PARTS

D2. NUMERICAL INDEX

# FIGURE QA ASSEMBLY LOCATION DIAGRAM



# FIGURE Q13 PUNCHER ASSEMBLY



NOTE : This assembly does not include the parts shown with key No. 1, 1A and 1B.



FIGURE & KEY NO.	PART NUMBER	RANK	QTY	DESCRIPTION	SERIAL NUMBER / REMARKS
Q13 -	4G1-4482-000		1	PUNCHER ASSEMBLY	PUNCHER UNIT-J1
	4G1-4467-000		1	PUNCHER ASSEMBLY	PUNCHER UNIT-K1
	4G1-4483-000		1	PUNCHER ASSEMBLY	PUNCHER UNIT-G1
	4G1-4484-000		1	PUNCHER ASSEMBLY	PUNCHER UNIT-H1
1	4G1-1263-000		1	PUNCHER CONTROLLER PCB ASS'Y	SEE NOTE
1A	4F1-1910-000		1	IC, M38039FFSP, CPU	SEE NOTE
1B	WA7-0484-000		1	IC, S-93C46ADP, EP-ROM	SEE NOTE
2	4A1-8685-000		1	SHUTTER, PUNCHER	
3	4H1-6514-000		1	CABLE, POWER CONNECTING	J1004,2004
4	4H1-6515-000		1	CABLE, INTERFACE	J1003,2003
5	4A1-8683-000		1	SPRING, TENSION	
6	4H1-6524-000		1	CABLE, SENSOR	J1006,2007-2009
7	FC2-2120-000		3	SCREW, M4X7	
8	4A1-8702-000		1	LABEL, "PUNCH DIAL"	
9	4A1-8672-000		1	MOUNT, PUNCHER	
10	4A1-8673-000		1	COVER, HARNESS	
11	4H1-6537-000		1	DUST LED PCB UNIT	J2005
12	4H1-6538-000		1	DUST PTR PCB UNIT	J2006
13	4A1-8679-000		1	GEAR, 16T/33T	
14	4A1-8680-000		1	GEAR, 19T/32T	
15	4A1-8681-000		1	DUCT, PUNCHER	
16	WG8-5362-000		1	IC, TLP1241, PHOTO-INTERRUPTER	PI2P J2007
17	4A1-8686-000		1	PANEL, DUST BOX	
18	4A1-8687-000		1	COVER, DUST BOX	
19	4K1-1078-000		1	MOTOR, STEPPING	M2P J1001
20	4H1-6530-000		1	CABLE, DUST SENSOR	J1005,2005,2006
21	4A1-8704-000		1	COVER, PUNCHER BASE	
501	XB1-2400-605		3	SCREW,MACH.,TRUSS HEAD,M4X6	
502	XB4-7300-805		8	SCREW,TAPPING,TRUSS HEAD,M3X8	
503	XD1-1104-629		1	SHIM	

FIGURE & KEY NO.	PART NUMBER	R A N K	Q' T Y	DESCRIPTION	SERIAL NUMBER / REMARKS
Q13 - 504	XB2-4300-605		2	SCREW,W/WASHER,M3X6	

# FIGURE Q14 PUNCHER TOTAL ASSEMBLY

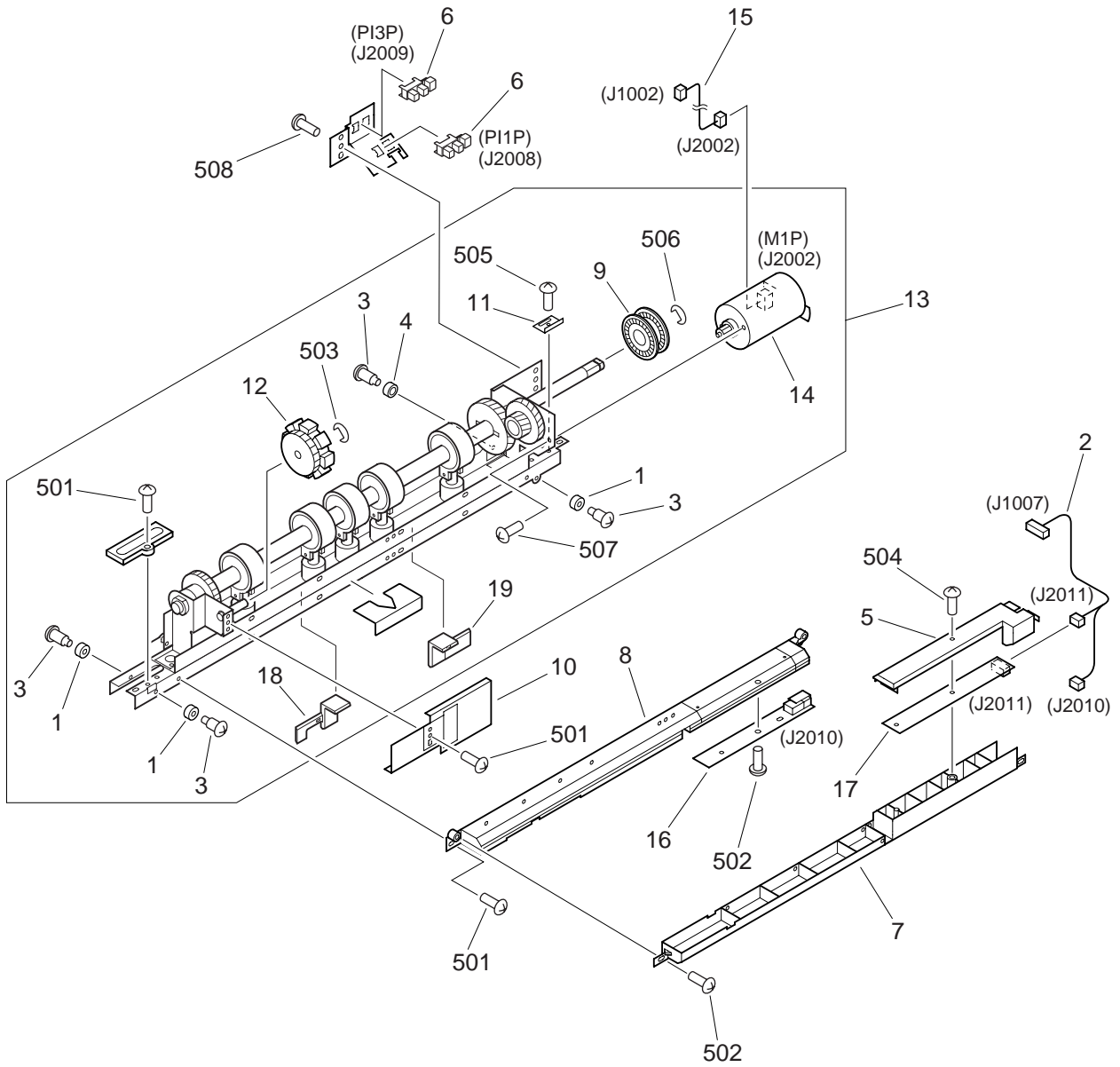


FIGURE & KEY NO.	PART NUMBER	RANK	QTY	DESCRIPTION	SERIAL NUMBER / REMARKS
Q14 -	NPN		RF	PUNCHER TOTAL ASSEMBLY	
1	4A1-8688-000		3	ROLLER, PUNCHER	
2	4H1-6523-000		1	CABLE, REGISTRATION SENSOR	J1007,2010,2011
3	FS1-9102-000		4	SCREW, STEPPED, M3	
4	FS5-6528-000		1	ROLLER	
5	4A1-8682-000		1	COVER, REGISTRATION	
6	WG8-5362-000		2	IC, TLP1241, PHOTO-INTERRUPTER	PI1P, 3P J2008, 2009
7	FF6-0507-000		1	HOLDER, SENSOR, UPPER	
8	FF6-0508-000		1	HOLDER, SENSOR, LOWER	
9	FB5-6775-000		1	PLATE, SENSOR FLAG	
10	4A1-8692-000		1	COVER, JAM CLEARING	
11	FB5-5968-000		1	RACK, SLIDE	
12	4A1-8701-000		1	KNOB, JAM CLEARING	
13	4G1-4493-000		1	PUNCH UNIT	PUNCHER UNIT-J1
	4G1-4492-000		1	PUNCH UNIT	PUNCHER UNIT-K1
	4G1-4494-000		1	PUNCH UNIT	PUNCHER UNIT-G1
	4G1-4495-000		1	PUNCH UNIT	PUNCHER UNIT-H1
14	4K1-1077-000		1	MOTOR, DC	M1P J2002
15	4H1-6531-000		1	CABLE, MOTOR	J1002, 2002
16	4H1-6507-000		1	PCB UNIT	J2010
17	4H1-6508-000		1	PCB UNIT	J2011
18	4A1-8705-000		1	PLATE, STIRRING, RIGHT	
19	4A1-8706-000		1	PLATE, STIRRING, LEFT	
501	XB1-2300-605		5	SCREW, MACH., TRUSS HEAD, M3X6	
502	XB4-7300-805		2	SCREW, TAPPING, TRUSS HEAD, M3X8	
503	XD2-1100-502		1	RING, E	
504	XB4-7301-209		1	SCREW, TAPPING, TRUSS HEAD, M3X12	
505	XB2-4300-805		1	SCREW, W/WASHER, M3X8	
506	XD2-1100-642		1	RING, E	
507	XB1-2300-505		2	SCREW, MACH., TRUSS HEAD, M3X5	

FIGURE & KEY NO.	PART NUMBER	R A N K	Q' T Y	DESCRIPTION	SERIAL NUMBER / REMARKS
Q14 - 508	XB1-2400-805		1	SCREW,MACH.,TRUSS HEAD,M4X8	



# FIGURE QB1 LIST OF CONNECTORS

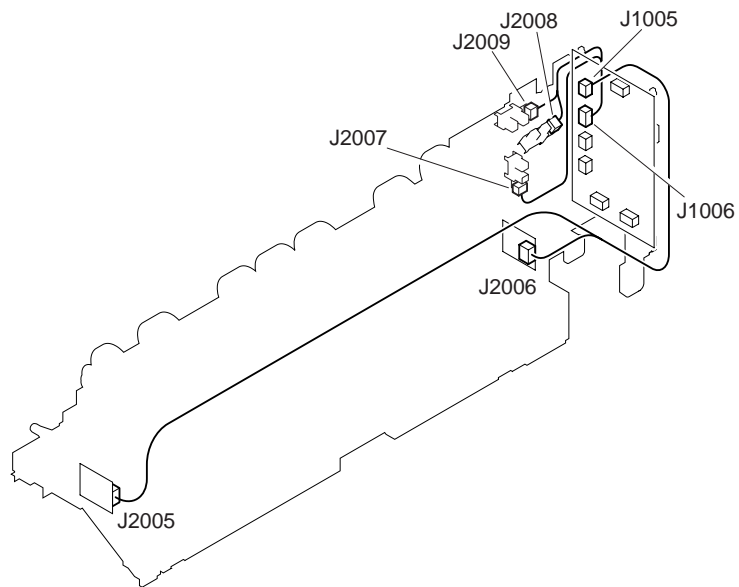
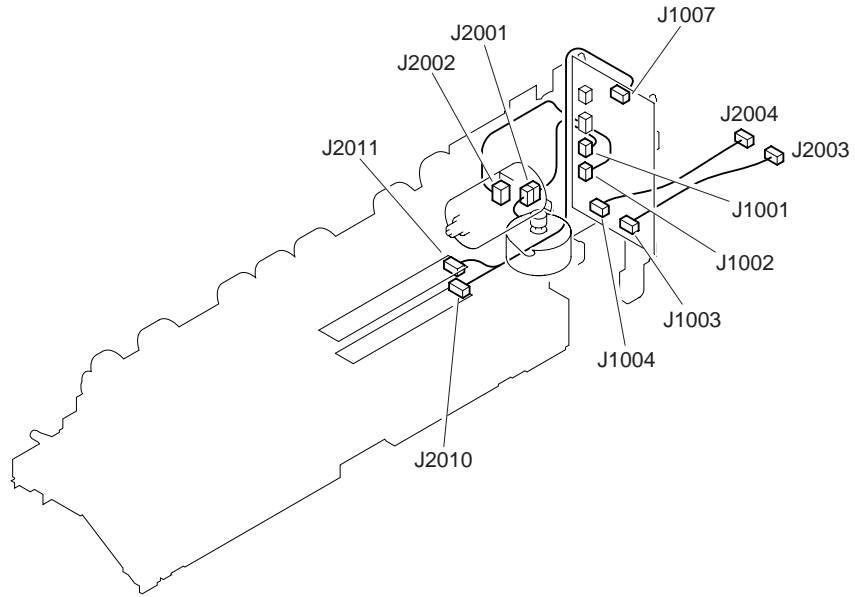


FIGURE & KEY NO.	PART NUMBER	R A N K	Q' T Y	DESCRIPTION	SERIAL NUMBER / REMARKS
Q B1 -	NPN		RF	LIST OF CONNECTORS	
J1001	PCB			DC CONTROLLER	M2P
	NPN			REGIST MOTOR	
J1002	PCB			DC CONTROLLER	
	4H1-6531-000		1	CABLE, MOTOR	
J1003	PCB			DC CONTROLLER	
	4H1-6515-000		1	CABLE, INTERFACE	
J1004	PCB			DC CONTROLLER	
	4H1-6514-000		1	CABLE, POWER CONNECTING	
J1005	PCB			DC CONTROLLER	
J1006	4H1-6530-000		1	CABLE, DUST SENSOR	
	PCB			DC CONTROLLER	
	4H1-6524-000		1	CABLE, SENSOR	
J1007	PCB			DC CONTROLLER	
	4H1-6523-000		1	CABLE, REGISTRATION SENSOR	
J2002	NPN			PUNCH MOTOR	M1P
	4H1-6531-000		1	CABLE, MOTOR	
J2003	SYS			SADDLE FINISHER	
	4H1-6515-000		1	CABLE, INTERFACE	
J2004	SYS			SADDLE FINISHER	
J2005	4H1-6514-000		1	CABLE, POWER CONNECTING	
	PCB			DUST LED	
	4H1-6530-000		1	CABLE, DUST SENSOR	
J2006	PCB			DUST PTR	
	4H1-6530-000		1	CABLE, DUST SENSOR	
J2007	NPN			SLIDE HOME POSITION SENSOR	PI2
	4H1-6524-000		1	CABLE, SENSOR	
J2008	NPN			PUNCH HOME POSITION SENSOR	PI1
	4H1-6524-000		1	CABLE, SENSOR	
J2009	NPN			CLOCK SENSOR	PI3



FIGURE & KEY NO.	PART NUMBER	R A N K	Q' T Y	DESCRIPTION	SERIAL NUMBER / REMARKS
Q B1 - J2009	4H1-6524-000		1	CABLE, SENSOR	
J2010	PCB			REGIST PTR	
	4H1-6523-000		1	CABLE, REGISTRATION SENSOR	
J2011	PCB			REGIST LED	
	4H1-6523-000		1	CABLE, REGISTRATION SENSOR	



# FIGURE QB2 LIST OF ELECTRIC PARTS

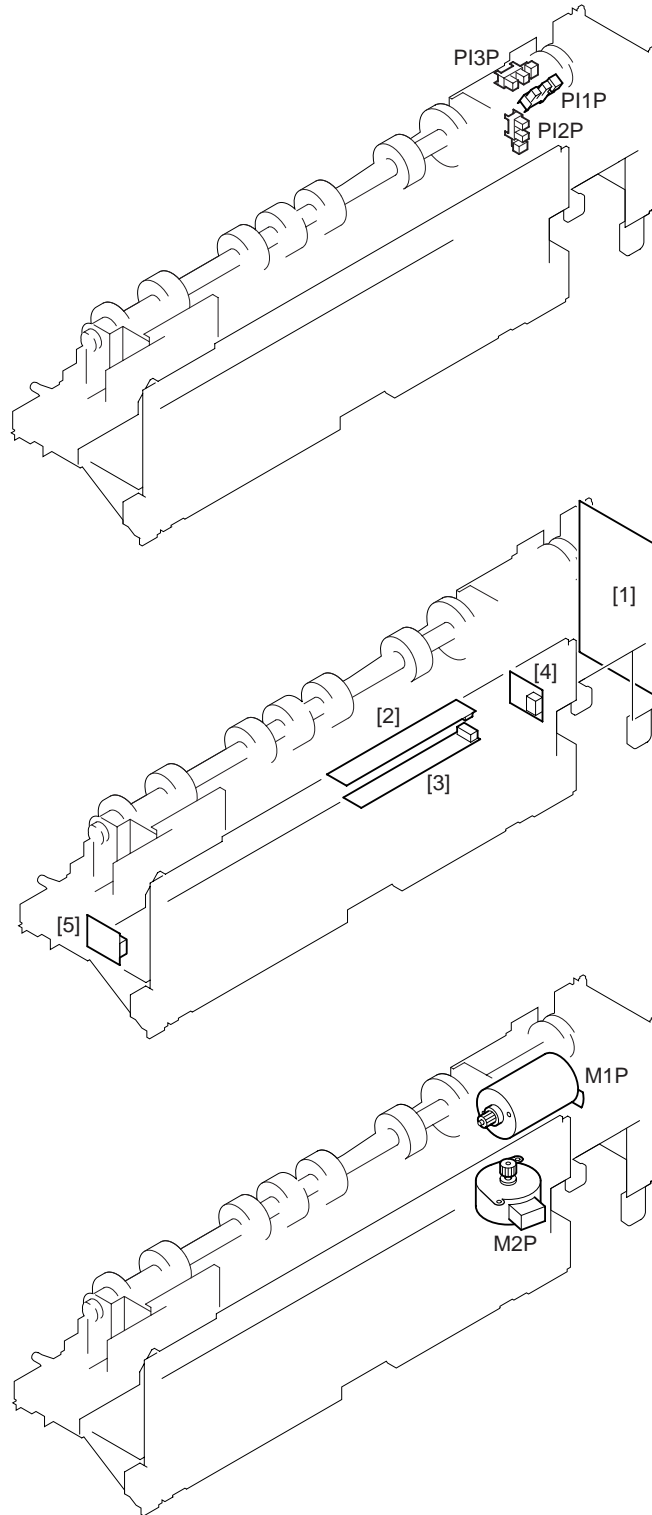


FIGURE & KEY NO.	PART NUMBER	RANK	QTY	DESCRIPTION	SERIAL NUMBER / REMARKS
Q B2 -	NPN		RF	LIST OF ELECTRIC PARTS	
1	4G1-1263-000		1	PUNCHER CONTROLLER PCB ASS'Y	
2	4H1-6508-000		1	PCB UNIT	
3	4H1-6507-000		1	PCB UNIT	
4	4H1-6538-000		1	DUST PTR PCB UNIT	
5	4H1-6537-000		1	DUST LED PCB UNIT	
M1P	4K1-1077-000		1	MOTOR, DC	
M2P	4K1-1078-000		1	MOTOR, STEPPING	
PI1P	WG8-5362-000		1	IC, TLP1241, PHOTO-INTERRUPTER	
PI2P	WG8-5362-000		1	IC, TLP1241, PHOTO-INTERRUPTER	
PI3P	WG8-5362-000		1	IC, TLP1241, PHOTO-INTERRUPTER	

# D1 NUMERICAL INDEX (Saddle Finisher-G1)

PART NUMBER	FIGURE & KEY NO.	PART NUMBER	FIGURE & KEY NO.	PART NUMBER	FIGURE & KEY NO.
4A1-7172-000	Q12 - 10	4A1-7330-000	Q32 - 16	4A1-7424-000	Q10 - 29
4A1-7177-000	Q35 - 1	4A1-7331-000	Q32 - 17	4A1-7427-000	Q32 - 32
4A1-7178-000	Q35 - 2	4A1-7332-000	Q32 - 18	4A1-7428-000	Q11 - 9
4A1-7181-000	Q35 - 77	4A1-7333-000	Q32 - 43	4A1-7476-000	Q35 - 50
4A1-7186-000	Q35 - 64	4A1-7334-000	Q30 - 8	4A1-7480-000	Q35 - 57
4A1-7187-000	Q35 - 61	4A1-7335-000	Q35 - 7	4A1-7481-000	Q35 - 60
4A1-7194-000	Q32 - 31	4A1-7336-000	Q12 - 16	4A1-7488-000	Q12 - 28
4A1-7195-000	Q10 - 20	4A1-7337-000	Q32 - 3	4A1-7494-000	Q32 - 35
4A1-7197-000	Q30 - 23	4A1-7338-000	Q22 - 8	4A1-7495-000	Q12 - 25
4A1-7204-000	Q35 - 69	4A1-7339-000	Q32 - 25	4A1-7496-000	Q12 - 26
4A1-7207-000	Q35 - 67		Q35 - 8	4A1-7497-000	Q10 - 16
4A1-7209-000	Q30 - 31	4A1-7340-000	Q35 - 9	4A1-7498-000	Q10 - 17
4A1-7212-000	Q30 - 42	4A1-7341-000	Q32 - 52	4A1-7499-000	Q10 - 22
4A1-7228-000	Q35 - 71	4A1-7342-000	Q32 - 49	4A1-7500-000	Q10 - 23
4A1-7240-000	Q24 - 7	4A1-7343-000	Q32 - 33	4A1-7501-000	Q10 - 2
4A1-7259-000	Q11 - 3	4A1-7344-000	Q32 - 51	4A1-7502-000	Q12 - 1
4A1-7260-000	Q20 - 1	4A1-7345-000	Q32 - 47	4A1-7503-000	Q10 - 4
4A1-7261-000	Q20 - 2	4A1-7346-000	Q32 - 19	4A1-7505-000	Q12 - 19
4A1-7262-000	Q20 - 3	4A1-7347-000	Q32 - 20	4A1-7506-000	Q12 - 20
4A1-7263-000	Q20 - 4	4A1-7348-000	Q32 - 21	4A1-7507-000	Q12 - 21
4A1-7264-000	Q20 - 13	4A1-7349-000	Q12 - 11	4A1-7508-000	Q12 - 22
4A1-7265-000	Q11 - 29	4A1-7350-000	Q35 - 10	4A1-7509-000	Q11 - 13
4A1-7267-000	Q11 - 1	4A1-7351-000	Q32 - 22	4A1-7513-000	Q32 - 41
4A1-7268-000	Q12 - 23	4A1-7352-000	Q32 - 39	4A1-7514-000	Q30 - 33
4A1-7269-000	Q12 - 24	4A1-7353-000	Q11 - 6	4A1-7515-000	Q12 - 9
4A1-7270-000	Q10 - 32	4A1-7354-000	Q11 - 7	4A1-7517-000	Q11 - 14
4A1-7271-000	Q32 - 10	4A1-7355-000	Q11 - 37	4A1-7518-000	Q11 - 15
4A1-7272-000	Q32 - 11	4A1-7357-000	Q35 - 11	4A1-7519-000	Q30 - 16
4A1-7273-000	Q30 - 15	4A1-7358-000	Q35 - 12	4A1-7520-000	Q10 - 3
4A1-7274-000	Q32 - 12	4A1-7359-000	Q35 - 13	4A1-7523-000	Q11 - 17
4A1-7275-000	Q30 - 27	4A1-7360-000	Q35 - 14	4A1-7524-000	Q11 - 18
4A1-7276-000	Q32 - 13	4A1-7361-000	Q35 - 15	4A1-7525-000	Q35 - 72
4A1-7277-000	Q10 - 33	4A1-7362-000	Q35 - 16	4A1-7526-000	Q24 - 15
4A1-7278-000	Q32 - 1	4A1-7363-000	Q35 - 17	4A1-7527-000	Q12 - 27
4A1-7279-000	Q32 - 14	4A1-7364-000	Q35 - 18	4A1-7528-000	Q11 - 19
4A1-7280-000	Q32 - 15	4A1-7365-000	Q35 - 19	4A1-7529-000	Q32 - 6
4A1-7281-000	Q32 - 2	4A1-7366-000	Q32 - 23	4A1-7530-000	Q35 - 29
4A1-7282-000	Q32 - 45	4A1-7367-000	Q24 - 11	4A1-7531-000	Q32 - 37
4A1-7283-000	Q32 - 44	4A1-7368-000	Q30 - 17	4A1-7532-000	Q32 - 38
4A1-7284-000	Q10 - 41	4A1-7369-000	Q10 - 34	4A1-7533-000	Q35 - 30
4A1-7285-000	Q32 - 50	4A1-7371-000	Q11 - 8	4A1-7534-000	Q11 - 30
4A1-7286-000	Q32 - 46		Q12 - 14	4A1-7535-000	Q10 - 9
4A1-7287-000	Q10 - 11		Q24 - 5	4A1-7536-000	Q35 - 51
4A1-7288-000	Q11 - 24	4A1-7372-000	Q32 - 26	4A1-7538-000	Q32 - 7
4A1-7289-000	Q24 - 8	4A1-7373-000	Q10 - 7	4A1-7539-000	Q11 - 32
4A1-7290-000	Q35 - 3	4A1-7374-000	Q10 - 30	4A1-7540-000	Q11 - 33
4A1-7291-000	Q10 - 12	4A1-7375-000	Q10 - 31	4A1-7542-000	Q11 - 20
4A1-7292-000	Q24 - 9	4A1-7376-000	Q35 - 20	4A1-7544-000	Q35 - 52
4A1-7293-000	Q10 - 13	4A1-7377-000	Q35 - 21	4A1-7545-000	Q35 - 53
4A1-7294-000	Q10 - 1	4A1-7378-000	Q10 - 15	4A1-7546-000	Q35 - 73
4A1-7295-000	Q35 - 4	4A1-7379-000	Q32 - 48	4A1-7547-000	Q10 - 18
4A1-7296-000	Q35 - 5	4A1-7380-000	Q10 - 8	4A1-7548-000	Q10 - 19
4A1-7297-000	Q35 - 68		Q32 - 4	4A1-7549-000	Q11 - 34
4A1-7298-000	Q35 - 74	4A1-7381-000	Q30 - 18	4A1-7551-000	Q35 - 31
4A1-7299-000	Q35 - 6	4A1-7382-000	Q12 - 38	4A1-7552-000	Q35 - 32
4A1-7300-000	Q22 - 16	4A1-7383-000	Q30 - 6	4A1-7566-000	Q10 - 37
4A1-7301-000	Q22 - 1	4A1-7384-000	Q32 - 40		Q22 - 9
4A1-7302-000	Q22 - 2	4A1-7385-000	Q35 - 22		Q35 - 33
4A1-7303-000	Q22 - 3	4A1-7386-000	Q35 - 23	4A1-7567-000	Q10 - 38
4A1-7304-000	Q22 - 4	4A1-7387-000	Q35 - 24		Q11 - 21
4A1-7305-000	Q22 - 5	4A1-7388-000	Q35 - 25		Q22 - 10
4A1-7306-000	Q22 - 6	4A1-7389-000	Q35 - 26		Q30 - 19
4A1-7307-000	Q22 - 7	4A1-7390-000	Q30 - 1		Q35 - 34
4A1-7308-000	Q22 - 18	4A1-7391-000	Q30 - 39	4A1-7572-000	Q11 - 22
4A1-7309-000	Q35 - 62	4A1-7392-000	Q30 - 7		Q22 - 11
4A1-7310-000	Q35 - 63	4A1-7400-000	Q10 - 35		Q30 - 20
4A1-7311-000	Q35 - 65		Q11 - 47	4A1-7573-000	Q22 - 12
4A1-7312-000	Q35 - 66	4A1-7401-000	Q32 - 5		Q35 - 36
4A1-7313-000	Q30 - 9	4A1-7402-000	Q30 - 25	4A1-7575-000	Q30 - 43
4A1-7314-000	Q30 - 36	4A1-7403-000	Q35 - 27	4A1-7577-000	Q11 - 2
4A1-7315-000	Q30 - 37	4A1-7404-000	Q35 - 28	4A1-7581-000	Q40 - 28
4A1-7316-000	Q30 - 38	4A1-7406-000	Q32 - 34	4A1-7583-000	Q40 - 31
4A1-7317-000	Q10 - 21	4A1-7407-000	Q22 - 21	4A1-7584-000	Q40 - 29
4A1-7318-000	Q11 - 31	4A1-7408-000	Q10 - 36	4A1-7585-000	Q32 - 42
4A1-7319-000	Q30 - 40	4A1-7409-000	Q12 - 34	4A1-7587-000	Q30 - 13
4A1-7320-000	Q30 - 41	4A1-7414-000	Q11 - 10	4A1-7588-000	Q30 - 28
4A1-7321-000	Q11 - 44	4A1-7415-000	Q10 - 14	4A1-7589-000	Q40 - 9
4A1-7322-000	Q35 - 59	4A1-7416-000	Q24 - 3	4A1-7590-000	Q40 - 51
4A1-7323-000	Q30 - 35	4A1-7417-000	Q11 - 11	4A1-7591-000	Q40 - 8
4A1-7324-000	Q30 - 32	4A1-7418-000	Q12 - 12	4A1-7592-000	Q40 - 10
4A1-7325-000	Q24 - 10	4A1-7419-000	Q11 - 12	4A1-7593-000	Q01 - 12
4A1-7326-000	Q24 - 17	4A1-7420-000	Q24 - 4	4A1-7594-000	Q10 - 42
4A1-7327-000	Q24 - 18	4A1-7421-000	Q24 - 12	4A1-7689-000	Q10 - 10
4A1-7328-000	Q30 - 5	4A1-7422-000	Q24 - 13	4A1-7691-000	Q11 - 23
4A1-7329-000	Q30 - 24	4A1-7423-000	Q24 - 14	4A1-8198-000	Q40 - 36

PART NUMBER	FIGURE & KEY NO.	PART NUMBER	FIGURE & KEY NO.	PART NUMBER	FIGURE & KEY NO.
4A1-8206-000	Q40 - 1	4H1-6452-000	Q12 - 30	4H1-6511-000	Q B1 - CN72
4A1-8207-000	Q40 - 2		Q B1 - CN4	4H1-6512-000	Q11 - 16
4A1-8210-000	Q40 - 35		Q B1 - CN23		Q B1 - CN19
4A1-8214-000	Q40 - 3		Q B1 - CN24		Q B1 - CN73
4A1-8215-000	Q40 - 4		Q B1 - CN25	4K1-1065-000	Q11 - 35
4A1-8217-000	Q40 - 5	4H1-6453-000	Q12 - 31		Q B2 - M2
4A1-8218-000	Q40 - 6		Q B1 - CN5	4K1-1066-000	Q30 - 34
4A1-8219-000	Q40 - 7		Q B1 - CN28		Q B2 - M1
4A1-8225-000	Q40 - 11		Q B1 - CN33		Q B2 - M3
4A1-8226-000	Q40 - 12		Q B1 - CN36	4K1-1067-000	Q30 - 11
4A1-8228-000	Q40 - 13	4H1-6454-000	Q12 - 13		Q B2 - M4
4A1-8229-000	Q40 - 14		Q24 - 1		Q B2 - M5
4A1-8230-000	Q40 - 15		Q30 - 2	4K1-1068-000	Q20 - 6
4A1-8232-000	Q40 - 48		Q B1 - CN34		Q B2 - M6
4A1-8233-000	Q40 - 17		Q B1 - CN35	4K1-1069-000	Q22 - 19
4A1-8238-000	Q40 - 22		Q B1 - CN43		Q B2 - M7
4A1-8239-000	Q40 - 23		Q B1 - CN44	4K1-1070-000	Q40 - 42
4A1-8240-000	Q40 - 26		Q B1 - CN54		Q B2 - M8
4A1-8263-000	Q40 - 30		Q B1 - CN55	4K1-4040-000	Q35 - 42
4A1-8264-000	Q40 - 25	4H1-6455-000	Q30 - 10		Q B2 - CL1
4A1-8265-000	Q40 - 24		Q B1 - CN29	4S1-9048-000	Q35 - 43
4A1-8313-000	Q10 - 24		Q B1 - CN30	4S1-9049-000	Q22 - 23
4A1-8314-000	Q12 - 29		Q B1 - CN31	4S1-9076-000	Q40 - 21
4A1-8316-000	Q12 - 8		Q B1 - CN32	4S1-9077-000	Q11 - 26
4A1-8319-000	Q30 - 21	4H1-6456-000	Q35 - 41		Q12 - 2
4A1-8321-000	Q32 - 24		Q B1 - CN38	4S1-9081-000	Q22 - 17
4A1-8322-000	Q35 - 70		Q B1 - CN39	FB5-0658-000	Q10 - 26
4A1-8324-000	Q35 - 58		Q B1 - CN40	FB5-0659-000	Q10 - 27
4A1-8326-000	Q35 - 56		Q B1 - CN41	FB5-0735-000	Q32 - 36
4A1-8327-000	Q35 - 55	4H1-6458-000	Q20 - 5	FC2-1175-000	Q35 - 35
4A1-8329-000	Q35 - 37		Q B1 - CN70	FC2-2120-000	Q01 - 4
4A1-8330-000	Q35 - 38		Q B1 - CN70		Q10 - 28
4A1-8331-000	Q35 - 39	4H1-6460-000	Q11 - 41		Q11 - 4
4A1-8332-000	Q35 - 40		Q B1 - CN15		Q12 - 3
4A1-8334-000	Q30 - 22		Q B1 - CN47		Q20 - 7
4A1-8337-000	Q12 - 39		Q B1 - CN48		Q22 - 13
4A1-8338-000	Q10 - 39		Q B1 - CN49		Q24 - 2
4A1-8339-000	Q10 - 40		Q B1 - CN52		Q30 - 3
4A1-8341-000	Q40 - 34	4H1-6461-000	Q12 - 32		Q32 - 8
4A1-8537-000	Q01 - 5		Q B1 - CN16		Q35 - 44
4A1-8538-000	Q01 - 6		Q B1 - CN37		Q40 - 54
4A1-8541-000	Q01 - 1		Q B1 - CN42	FC2-5034-000	Q11 - 36
4A1-8542-000	Q01 - 7	4H1-6462-000	Q12 - 33		Q20 - 8
4A1-8543-000	Q01 - 8		Q B1 - CN9		Q30 - 12
4A1-8544-000	Q01 - 9		Q B1 - CN36		Q40 - 19
4A1-8545-000	Q01 - 2		Q B1 - CN50	FC2-5035-000	Q40 - 20
4A1-8547-000	Q01 - 3		Q B1 - CN53	FC2-5827-000	Q10 - 6
4A1-8548-000	Q01 - 10	4H1-6463-000	Q11 - 42		Q11 - 28
4B1-0584-000	Q10 - 43		Q B1 - CN10		Q12 - 5
4B1-0585-000	Q10 - 25		Q B1 - CN56		Q20 - 9
4B1-0586-000	Q12 - 4		Q B1 - CN57		Q24 - 6
4B1-0740-000	Q40 - 53	4H1-6464-000	Q30 - 26		Q30 - 29
4B1-0742-000	Q40 - 50		Q B1 - CN13		Q32 - 9
4B1-0743-000	Q40 - 27		Q B1 - CN59		Q35 - 46
4B1-0744-000	Q40 - 44	4H1-6465-000	Q12 - 35	FC3-0661-000	Q40 - 18
4B1-0746-000	Q40 - 47		Q B1 - CN3	FC3-0779-000	Q40 - 33
4B1-0748-000	Q40 - 45		Q B1 - CN62	FS1-9009-000	Q11 - 5
4B1-0754-000	Q40 - 43		Q B1 - CN64	FS1-9073-000	Q01 - 11
4F1-1556-000	Q11 - 27	4H1-6466-000	Q12 - 36	FS2-1615-000	Q22 - 14
4F1-1557-000	Q12 - 15		Q B1 - CN8		Q35 - 47
4F1-1569-000	Q35 - 75		Q B1 - CN66	FS2-1672-000	Q12 - 6
4F1-1570-000	Q35 - 76		Q B1 - CN68		Q20 - 10
4F1-1679-000	Q40 - 32		Q B1 - CN69		Q30 - 30
4F1-2053-000	Q40 - 46	4H1-6467-000	Q11 - 43		Q32 - 27
4G1-1242-000	Q90 -		Q B1 - CN6		Q35 - 48
	Q B2 - 1		Q B1 - CN70	PCB	Q B1 - CN1
	Q20 -		Q B1 - CN71		Q B1 - CN2
4G1-3999-000	Q22 -	4H1-6468-000	Q22 - 22		Q B1 - CN3
4G1-4003-000	Q30 -		Q B1 - CN7		Q B1 - CN4
4G1-4010-000	Q32 -		Q B1 - CN11		Q B1 - CN5
4G1-4021-000	Q24 -		Q B1 - CN72		Q B1 - CN6
4G1-4044-000	Q35 -	4H1-6492-000	Q90 - 1		Q B1 - CN7
4G1-4052-000	Q40 -	4H1-6502-000	Q40 - 37		Q B1 - CN8
4G1-4268-000	Q12 - 17	4H1-6503-000	Q40 - 38		Q B1 - CN9
4H1-6449-000	Q30 - 44		Q B2 - PI18		Q B1 - CN10
	Q B2 - MS1		Q40 - 39		Q B1 - CN11
	Q B2 - MS2	4H1-6504-000	Q B1 - J1		Q B1 - CN12
	Q B2 - MS3		Q B1 - J2		Q B1 - CN13
4H1-6450-000	Q35 - 45	4H1-6505-000	Q40 - 40		Q B1 - CN14
	Q B2 - PI10		Q B1 - J2		Q B1 - CN15
4H1-6451-000	Q10 - 5	4H1-6506-000	Q40 - 41		Q B1 - CN16
	Q B1 - CN1		Q B1 - CN72		Q B1 - CN18
	Q B1 - CN2		Q B1 - J1		Q B1 - CN19
	Q B1 - CN20	4H1-6511-000	Q12 - 37		Q B1 - J1
	Q B1 - JS1		Q B1 - CN18		Q B1 - J1

PART NUMBER	FIGURE & KEY NO.	PART NUMBER	FIGURE & KEY NO.	PART NUMBER	FIGURE & KEY NO.
PCB	Q B1 - J2				
RA2-2452-000	Q B1 - J2				
WA7-0484-000	Q40 - 52				
WG8-5362-000	Q90 - 2				
	Q11 - 25				
	Q12 - 7				
	Q20 - 11				
	Q24 - 16				
	Q30 - 14				
	Q32 - 28				
	Q35 - 54				
	Q B2 - PI1				
	Q B2 - PI2				
	Q B2 - PI3				
	Q B2 - PI4				
	Q B2 - PI5				
	Q B2 - PI6				
	Q B2 - PI7				
	Q B2 - PI8				
	Q B2 - PI9				
	Q B2 - PI11				
	Q B2 - PI12				
	Q B2 - PI13				
	Q B2 - PI15				
	Q B2 - PI16				
	Q B2 - PI17				
	Q B2 - PI22				
WG8-5421-000	Q22 - 20				
	Q B2 - PI14				
	Q B2 - PI23				
	Q B2 - PI24				
XB1-2300-605	Q40 - 502				
XB1-2400-607	Q10 - 501				
	Q40 - 505				
XB1-2401-005	Q35 - 501				
XB4-7300-607	Q10 - 503				
XB4-7401-007	Q01 - 501				
	Q10 - 502				
	Q11 - 502				
	Q12 - 501				
	Q30 - 501				
	Q32 - 502				
	Q40 - 503				
XD2-1100-502	Q40 - 501				
XD2-1100-642	Q40 - 504				
XD3-2200-102	Q30 - 503				
	Q32 - 501				
	Q35 - 502				
XD3-2200-122	Q12 - 502				
	Q20 - 501				
	Q22 - 503				
	Q30 - 502				
XD3-2200-142	Q11 - 501				
	Q22 - 501				
	Q35 - 503				
	Q40 - 508				
XD3-2300-122	Q40 - 506				
XD3-2300-142	Q11 - 503				
	Q35 - 504				
	Q40 - 507				
XD3-2300-162	Q35 - 505				
XD3-2300-182	Q22 - 502				
	Q35 - 506				
XF2-1604-940	Q32 - 29				
XF2-1605-040	Q11 - 46				
XF2-1606-140	Q30 - 4				
XF2-1607-240	Q35 - 49				
XF2-1607-440	Q12 - 18				
XF2-1607-640	Q32 - 30				
XF2-1608-040	Q20 - 12				
XF2-1618-840	Q11 - 40				
XF2-1619-860	Q11 - 39				
XF2-1804-070	Q40 - 49				
XF2-1807-460	Q22 - 15				
XF2-1809-710	Q40 - 16				
XF2-1817-960	Q11 - 38				

# D2 NUMERICAL INDEX (Puncher Unit-J1/K1/G1/H1)

PART NUMBER	FIGURE & KEY NO.	PART NUMBER	FIGURE & KEY NO.	PART NUMBER	FIGURE & KEY NO.
4A1-8672-000	Q13 - 9	WG8-5362-000	Q B2 - PI3P		
4A1-8673-000	Q13 - 10	XB1-2300-505	Q14 - 507		
4A1-8679-000	Q13 - 13	XB1-2300-605	Q14 - 501		
4A1-8680-000	Q13 - 14	XB1-2400-605	Q13 - 501		
4A1-8681-000	Q13 - 15	XB1-2400-805	Q14 - 508		
4A1-8682-000	Q14 - 5	XB2-4300-605	Q13 - 504		
4A1-8683-000	Q13 - 5	XB2-4300-805	Q14 - 505		
4A1-8685-000	Q13 - 2	XB4-7300-805	Q13 - 502		
4A1-8686-000	Q13 - 17		Q14 - 502		
4A1-8687-000	Q13 - 18	XB4-7301-209	Q14 - 504		
4A1-8688-000	Q14 - 1	XD1-1104-629	Q13 - 503		
4A1-8692-000	Q14 - 10	XD2-1100-502	Q14 - 503		
4A1-8701-000	Q14 - 12	XD2-1100-642	Q14 - 506		
4A1-8702-000	Q13 - 8				
4A1-8704-000	Q13 - 21				
4A1-8705-000	Q14 - 18				
4A1-8706-000	Q14 - 19				
4F1-1910-000	Q13 - 1A				
4G1-1263-000	Q13 - 1				
	Q B2 - 1				
4G1-4467-000	Q13 -				
4G1-4482-000	Q13 -				
4G1-4483-000	Q13 -				
4G1-4484-000	Q13 -				
4G1-4492-000	Q14 - 13				
4G1-4493-000	Q14 - 13				
4G1-4494-000	Q14 - 13				
4G1-4495-000	Q14 - 13				
4H1-6507-000	Q14 - 16				
	Q B2 - 3				
4H1-6508-000	Q14 - 17				
	Q B2 - 2				
4H1-6514-000	Q13 - 3				
	Q B1 - J1004				
	Q B1 - J2004				
4H1-6515-000	Q13 - 4				
	Q B1 - J1003				
	Q B1 - J2003				
4H1-6523-000	Q14 - 2				
	Q B1 - J1007				
	Q B1 - J2010				
	Q B1 - J2011				
4H1-6524-000	Q13 - 6				
	Q B1 - J1006				
	Q B1 - J2007				
	Q B1 - J2008				
	Q B1 - J2009				
4H1-6530-000	Q13 - 20				
	Q B1 - J1005				
	Q B1 - J2005				
	Q B1 - J2006				
4H1-6531-000	Q14 - 15				
	Q B1 - J1002				
	Q B1 - J2002				
4H1-6537-000	Q13 - 11				
	Q B2 - 5				
4H1-6538-000	Q13 - 12				
	Q B2 - 4				
4K1-1077-000	Q14 - 14				
	Q B2 - M1P				
4K1-1078-000	Q13 - 19				
	Q B2 - M2P				
FB5-5968-000	Q14 - 11				
FB5-6775-000	Q14 - 9				
FC2-2120-000	Q13 - 7				
FF6-0507-000	Q14 - 7				
FF6-0508-000	Q14 - 8				
FS1-9102-000	Q14 - 3				
FS5-6528-000	Q14 - 4				
PCB	Q B1 - J1001				
	Q B1 - J1002				
	Q B1 - J1003				
	Q B1 - J1004				
	Q B1 - J1005				
	Q B1 - J1006				
	Q B1 - J1007				
	Q B1 - J2005				
	Q B1 - J2006				
	Q B1 - J2010				
	Q B1 - J2011				
WA7-0484-000	Q13 - 1B				
WG8-5362-000	Q13 - 16				
	Q14 - 6				
	Q B2 - PI1P				
	Q B2 - PI2P				





Prepared by  
OFFICE IMAGING PRODUCTS QUALITY ASSURANCE CENTER  
CANON INC.  
Printed in Japan

REVISION 0 [ APR. 2001 ]

5-1, Hakusan 7-chome, Toride-city, Ibaraki 302-8501, Japan



This publication is  
printed on 100%  
recycled paper.

**Canon**